


4" Tank Fitting Adapter Generation II - TFA-400-II

Installation Instructions

Warning  Follow all federal, state and local laws governing the installation of this product and its associated systems. When no other regulations apply, follow NFPA codes 30, 30A and 70 from the National Fire Protection Association. Failure to follow these codes could result in severe injury, death, serious property damage and/or environmental contamination.

Procedure

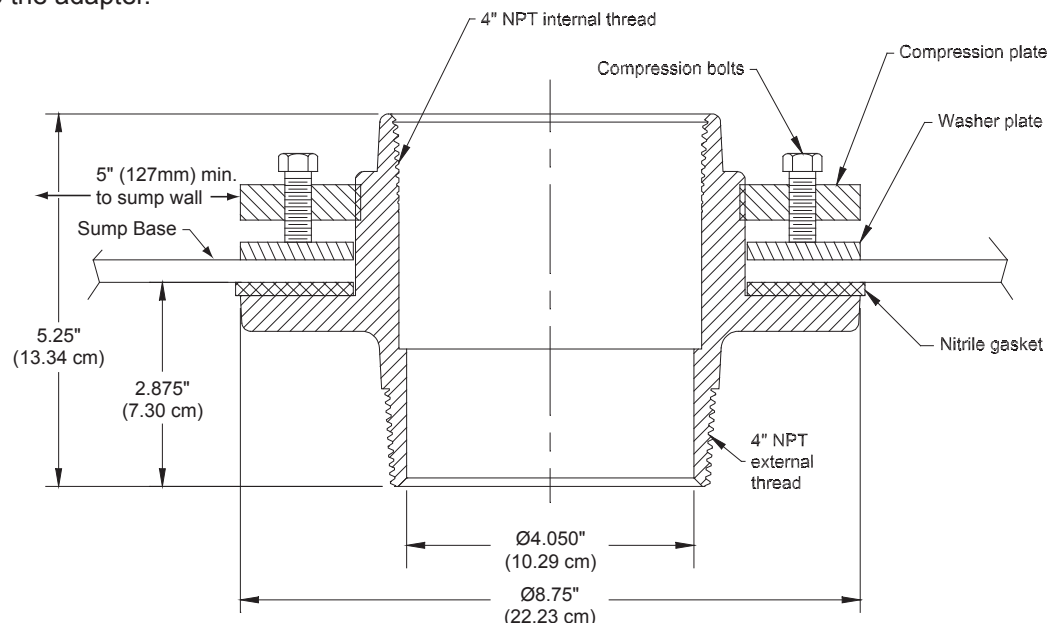
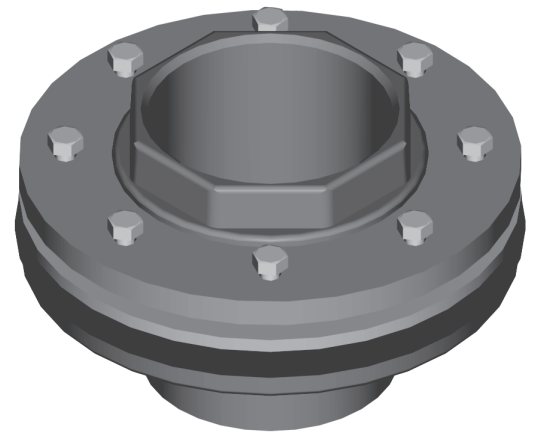
1. Coat the lower external threads of the Tank Fitting Adapter (TFA) with a gas and oil resistant thread sealing compound.
2. Thread the tank fitting adapter onto the 4" fitting in the underground storage tank. Use the hex at the top of the fitting to tighten it down securely.
3. Cut a mounting hole. This requires the use of a 5½" (14 cm) diameter hole saw to drill a hole in the bottom of the polyethylene/ fiberglass tank sump in the required location.

Note: To reduce stress on tank sumps, FFS recommends a minimum of 5" between the inside corner of the sump wall and the outside edge of the compression plate.

Note: If using two (2) TFAs, measure the distance between the tank bungs and mark each location in the sump bottom, ensuring the proper installation locations.


4. De-burr the hole to remove any rough edges.
5. Remove the compression plate and the washer plate from the adapter.
6. Add a uniform bead of urethane sealant to the top side of the gasket. **Do not remove the gasket - it is permanently adhered to the fitting and removing it could cause the seal to fail.**
7. Place the sump onto the tank fitting adapter and orient it for the best pipe entry angles.
8. Place the washer plate onto the adapter.
9. Thread the compression plate on until it bottoms against the washer plate.

10. Using a cross pattern to apply an even amount of pressure all the way around, install and tighten the compression plate bolts to a maximum of 12 lbf*ft (16.27 N*m). Make sure that the bolt heads do not bottom on the compression plate. **Do not over-tighten** — this may cause damage to the compression plate.



6" Tank Fitting Adapter - TFA-600

Installation Instructions

Warning  Follow all federal, state and local laws governing the installation of this product and its associated systems. When no other regulations apply, follow NFPA codes 30, 30A and 70 from the National Fire Protection Association. Failure to follow these codes could result in severe injury, death, serious property damage and/or environmental contamination.

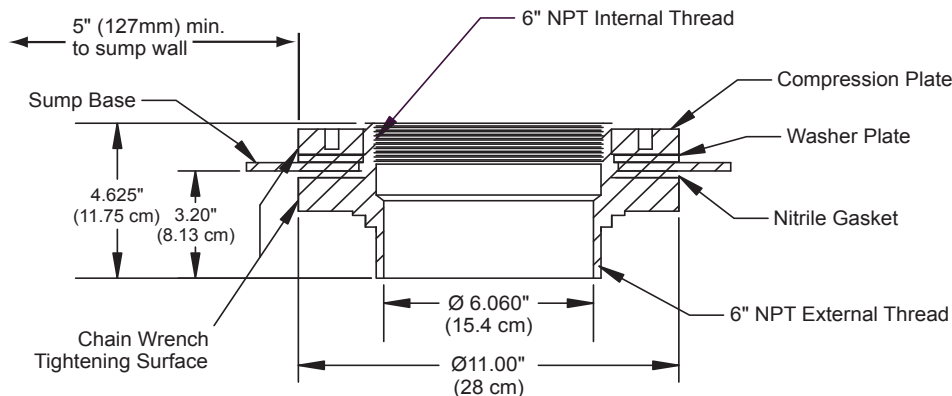
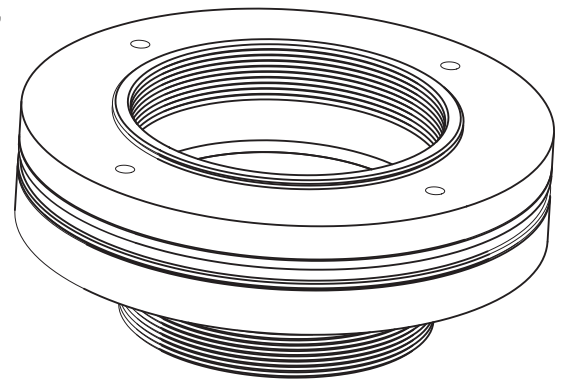
Procedure

1. Coat the lower external threads of the tank fitting adapter with a gas and oil resistant thread sealing compound.
2. Thread the tank fitting adapter onto the 6" fitting in the underground storage tank, and use a chain wrench to tighten it down securely.
3. Cut a mounting hole. This requires the use a 7½" (19 cm) diameter hole saw to drill a hole in the bottom of the polyethylene/fiberglass tank sump in the required location.

Note: To reduce stress on tank sumps, FFS recommends a minimum of 5" between the inside corner of the sump wall and the outside edge of the compression plate.

Note: If using two (2) TFAs, measure the distance between the tank bungs and mark each location in the sump bottom, ensuring the proper installation locations.

4. De-burr the hole to remove any rough edges.
5. Remove the compression plate and the washer plate from the adapter.
6. Add a uniform bead of urethane sealant to the top side of the gasket. **Do not remove the gasket - it is permanently adhered to the fitting and removing it could cause the seal to fail.**
7. Place the sump onto the tank fitting adapter and orient it for the best pipe entry angles.
8. Place the washer plate onto the adapter.
9. Thread the compression plate on until it bottoms against the washer plate.
10. Use a chain wrench to complete the tightening process.



Franklin Fueling Systems

www.franklinfueling.com

3760 Marsh Road • Madison, WI 53718, U.S.A.

Tel: +1 608 838 8786 • Fax: +1 608 838 6433

Tel: USA & Canada 1 800 225 9787 • Tel: México 001 800 738 7610

Franklin Fueling Systems GmbH

Rudolf-Diesel-Strasse 20 • 54516 Wittlich, GERMANY

Tel: +49-6571-105-380 • Fax: +49-6571-105-510

Manual	Rev	Date	Changes from previous
771-109-00	9	Mar. 2012	Reference material brand name Removal