


# Below Grade Wall Transition Sleeve (WTS-400)

## Installation Instructions

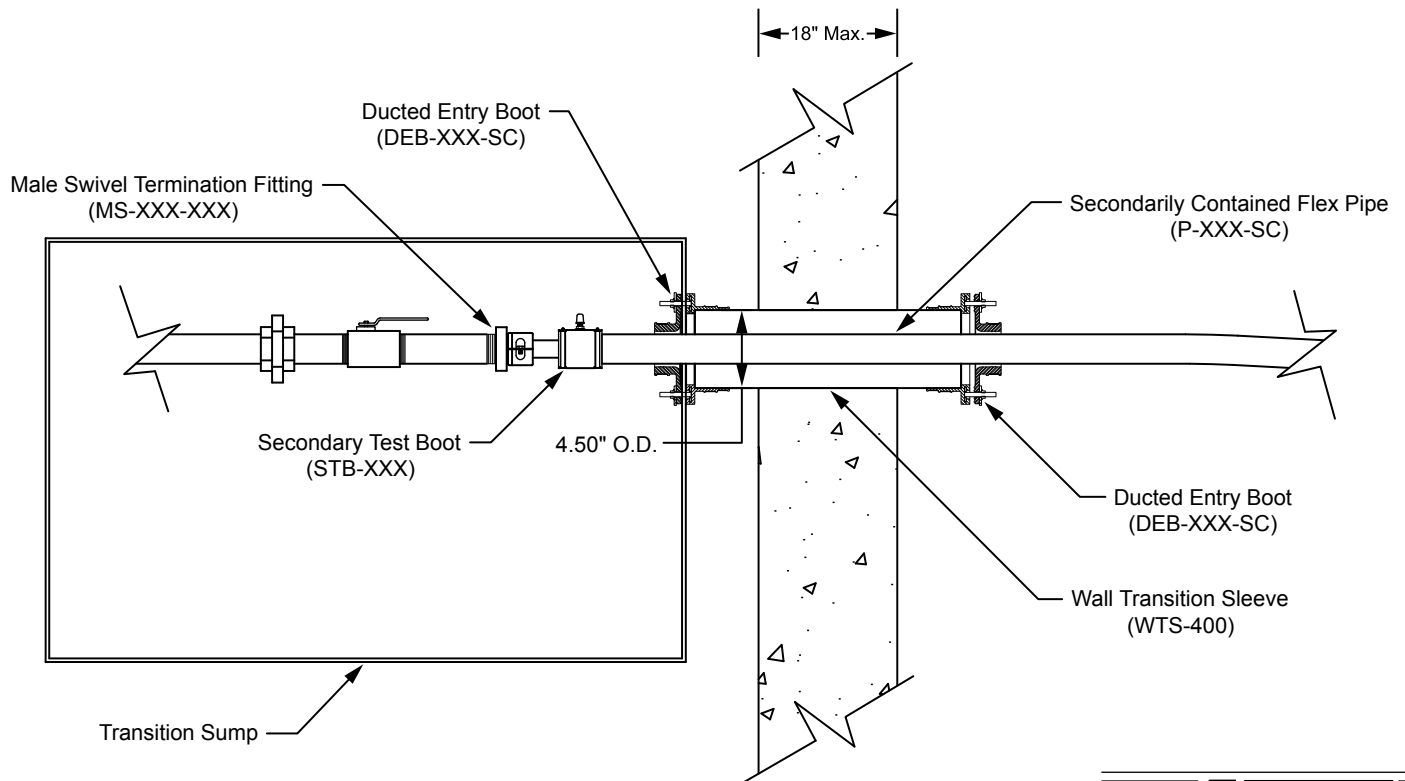
**Warning**  Follow all federal, state and local laws governing the installation of this product and its associated systems. When no other regulations apply, follow NFPA codes 30, 30A and 70 from the National Fire Protection Association. Failure to follow these codes could result in severe injury, death, serious property damage and/or environmental contamination.

### Procedure

1. Core an appropriately sized hole through the wall at the desired location for the WTS-400.

**Note:** The hole mentioned in Step 1 must be a minimum of 4.5" to accommodate the WTS-400.

2. Attach an appropriately sized ducted entry boot to one end of the wall transition sleeve per the ducted entry boot installation instructions.
3. Insert the wall transition sleeve into the hole in the wall that you cored in Step 1.
4. Push the piping through the ducted entry boot and the WTS-400.
5. Attach the second ducted entry boot to a transition sump at the desired location.
6. Push the piping through the entry boot in the transition sump.
7. Attach the WTS-400 to the ducted entry boot on the transition sump.
8. Seal the interstitial space around the WTS-400 and secure it according to pertinent codes.



**Franklin Fueling Systems**

3760 Marsh Road • Madison, WI 53718 U.S.A.  
Tel: +1 608 838 8786 • Fax: +1 608 838 6433 • [www.franklinfueling.com](http://www.franklinfueling.com)  
Tel: USA & Canada 1 800 225 9787 • Tel: México 001 800 738 7610