

Colibri System Board Field Replacement Instructions

Tools Needed

- ¼ Inch nut driver
- #2 Phillips screwdriver.

Backup Settings

If replacing a board that can still communicate, connect to it and download setup, registration file and database.

To backup the data, use the TSA Upgrade tool. Refer to INCON document 000-0075 for information about downloading and using the upgrade tool. Individually select the tabs Registration, Setup and Database and in each case click Save.

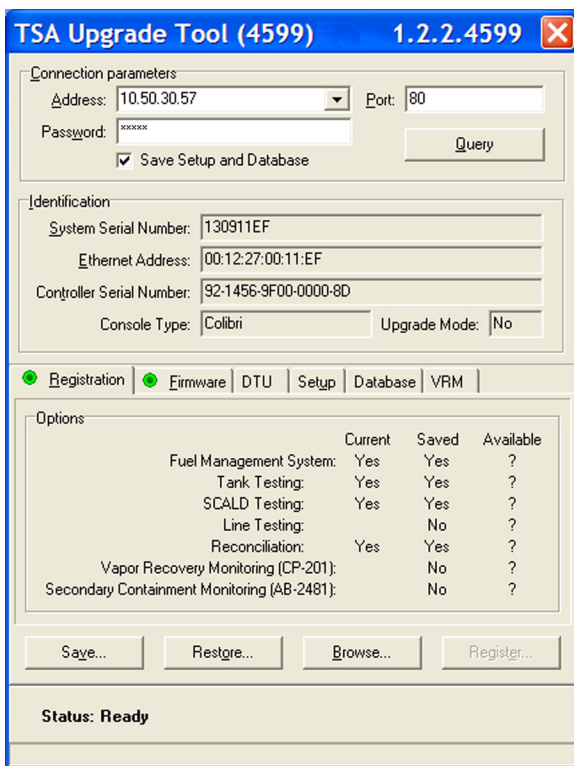


Figure 1: Upgrade Tool Screen

Removing Existing System Board

1. Remove electrical power from unit at the breaker.
2. Remove the front cover from the unit.
3. Disconnect the plugs from the Power, Relay and Probe receptacles and any communication cables or USB sticks attached to communication ports.
4. Loosen the two screws on the left hand side of the power brick (1 and 2 in Figure 2). Do not pull the screws out.

5. Remove the two screws on the right hand side of the board (4 and 5 in Figure 2) and set them aside with the Intrinsically Safe shield and the display ground strap.
6. Remove the standoffs from the top right and bottom left corners of the board (3 and 4 in Figure 2).
7. Grasp the board and gently pull out from the top. Once the top portion is an inch or so from the enclosure gently lift the board up and out of the enclosure.

Before placing the replacement board in the enclosure, first remove the two lock nuts from the left hand side of the power block/brick (1 and 2 in Figure 2) being careful that the screws do not drop out. Use the two nuts to secure the two screws on the unit that was removed. There will also be a locknut under the standoff in location 4.

The replacement board that is being installed will be one of two types:

- CL-MBXX Spare controller module, Fuel Management System Application only, no software options
- CL-MBXX Replacement controller module, factory programmed with the systems required options

If the system is having the board replaced with a spare module, the board may need to be upgraded to regain either SCALD or TRAC software options. This is only if the original system had these software options included.

The TSA Upgrade tool can be used to upgrade the CL-MBXX. For assistance with upgrades, contact the FFS Technical Support Team.

If the CL-MBXX is ordered for the correct serial number of the system, the board will have the necessary software options installed. This will be a “plug and play” board replacement.

Part #	Description
CL-MB	CL6 Replacement mainboard, no display
CL-MB/R	CL6 Replacement mainboard, no display with required options
CL-MBWD	CL6 Replacement mainboard with display
CL-MBWD/R	CL6 Replacement mainboard with display and required options

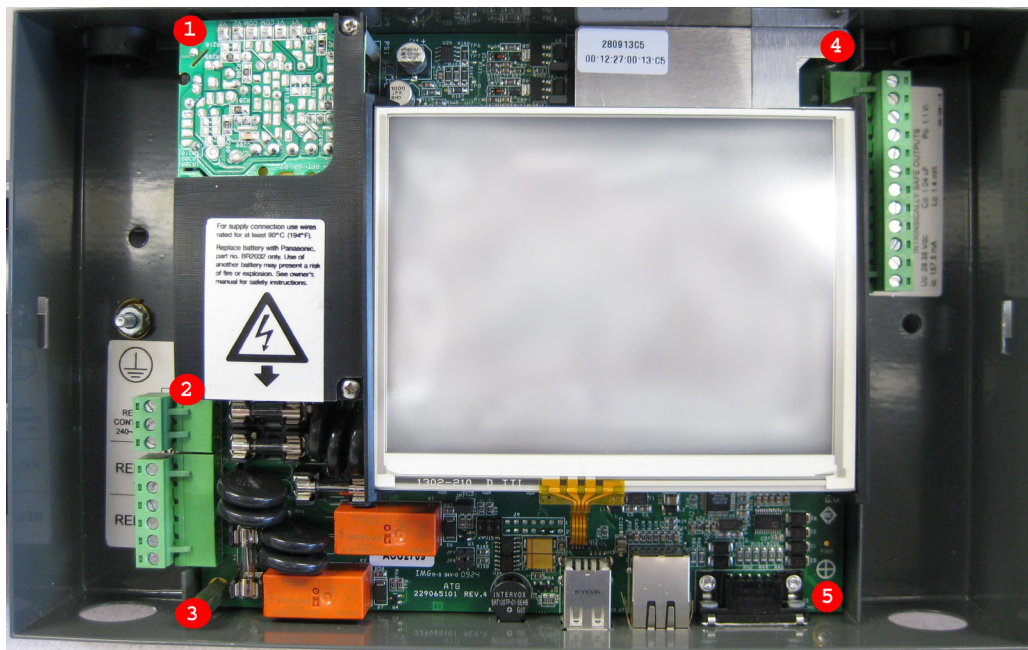


Figure 2: System Board Fastener Locations

Install New System Board

1. Gently slide the board into the enclosure so that the communication ports are aligned with the proper holes in the enclosure. Gently push the board down so that the communication ports slide into the holes. Then push the board into the enclosure so that it is fully seated.
2. Tighten the two screws on the left hand side of the power supply (1 and 2 on Figure 2).
3. Install the long standoff in the bottom left hand corner and the short standoff in the top right hand corner (3 and 4 in Figure 2).
4. Install one screw with lock washer in the bottom right hand corner (5 in Figure 2).
5. Place the intrinsically safe shield and the ground strap over the potted area so that the hole is aligned with the hole in the short standoff and fasten with the remaining screw with lock washer (4 in Figure 2). The tab of the ground strap must be inserted between the display and the display support during reassembly. Ensure the tab of the ground strap is pushed into the crook of the display mount and not in contact with the glass of the display.
6. Connect power, relay and probe plugs to the proper receptacles.
7. Connect any communication cables or USB sticks in use.
8. Apply power to the unit.
9. Upload any saved set-up, registration or database files as needed (TSA upgrade tool: select the tab and then click restore).

Note; Units will be furnished with the IS shield and ground strap installed.



INCON[®]
Franklin Fueling Systems

www.franklinfueling.com

3760 Marsh Road • Madison, WI 53718, U.S.A.
Tel: +1 608 838 8786 • Fax: +1 608 838 6433
Tel: USA & Canada 1 800 225 9787 • Tel: México 001 800 738 7610

Franklin Fueling Systems GmbH
Rudolf-Diesel-Strasse 20 • 54516 Wittlich, GERMANY
Tel: +49-6571-105-380 • Fax: +49-6571-105-510