

TECHNICAL BULLETIN

January 2, 2013 • TB0113-01

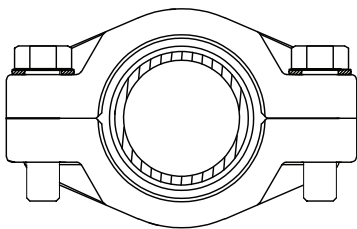
Replacement of XP Clam Shell Fittings

In the case of any leakage around XP clam shell fitting, use this procedure to replace the fittings.

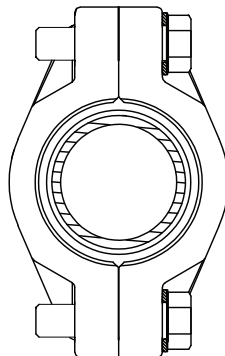
1. Follow all safety procedures for lock out/tag out requirements for this product.
2. Relieve pressure in the line.
3. Remove the (2) existing 7/16-14 bolts from the fitting (clamp).
4. Remove the (2) existing clamps. Examine the pipe for any irregularities. These include cuts or cracks in any of the layers or an uneven pipe end cut.



5. Apply Vaseline to the area on the pipe that will be covered by the new clamps.
6. Reinstall the new clamps so that they are 90 degrees off from the original installation location.



Original Orientation



Orientation of
New Fitting



7. Place the drilled and tapped compression clamp halves onto the fitting, making sure that the locking groove on the clamp is in the mating groove on the fitting.
8. Insert two hex head bolts with washers through the drilled clamp and thread them into the tapped clamp half.
9. Using a 1/2" socket, tighten the bolts in an alternating pattern until the clamps are metal to metal.

Note: Do not use any type of electric or battery operated device to fasten down the clamp.

10. Allow the line to be energized and then check for leaks.