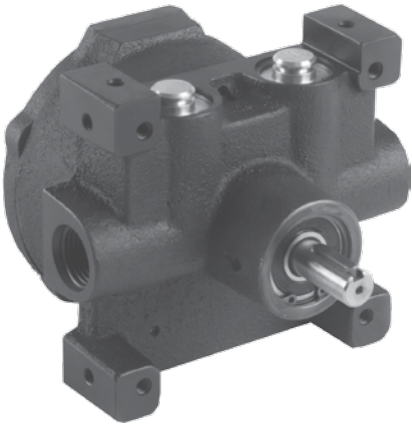




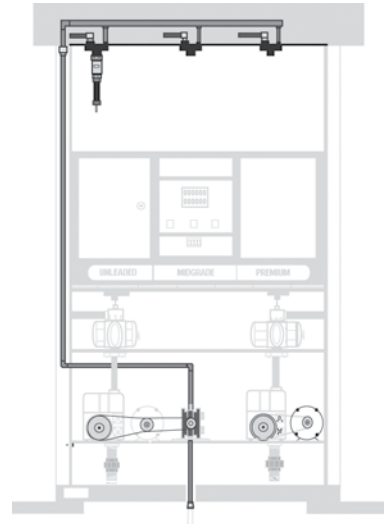
VP1200 Series Self Contained Suction Pump Dispenser-Mounted Vacuum Source

Similar to the VP1000, except powered by a suction pump motor. One pump supplies both sides. Simple installation with no excavation minimizes downtime and labor; ideal for retrofitting new or existing dispenser, installs easily on a bracket or attached to the frame of the unit. High vacuum level assures clearing of flooded vapor hoses.



- Small size: 5.25" x 5" x 4.38"
- Compatible with new and existing dispensers
- International approvals - contact Franklin Fueling Systems

VP1200 Installation



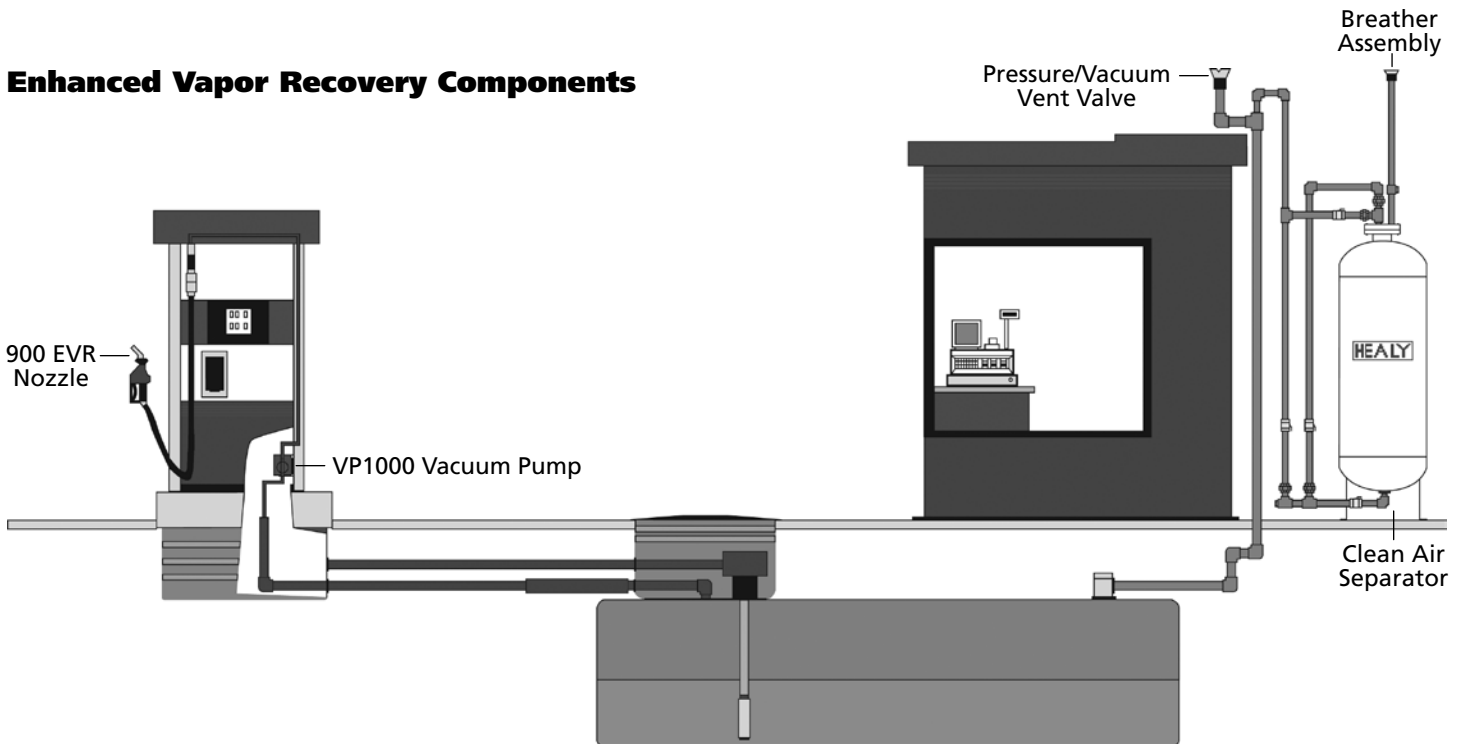
VP1200 SELF-CONTAINED DISPENSER MOUNTED VACUUM SOURCE

Primarily for international markets, contact factory for additional information.
Non-electric, powered by a suction dispenser pump motor.

Part Number	Description
VP1200-1	Self-contained Suction Pump-mounted Assembly
VP1200-3	Self-contained Suction Pump-mounted Assembly with Flame Arrestors
VP1200VR	Vane and Rotor Replacement Kit



Enhanced Vapor Recovery Components



9961 Clean Air Separator (CAS)

The Healy Clean Air Separator prevents excess emissions and product loss by controlling gasoline storage tank pressure. The unit works in combination with Healy ORVR/EVR type nozzles as part of a system that increases overall performance and efficiency.



- High reliability and maintenance-free
- No mechanical moving parts
- No electrical connections needed
- 5-year warranty

CARB Certified for Use With	Executive Order Number	Tank Type
Healy EVR Components	VR-201 VR-202	UST without ISD UST with ISD

CLEAN AIR SEPARATOR FOR ENHANCED VAPOR RECOVERY SYSTEMS	
Part Number	Description
9961	Clean Air Separator (CAS), Includes P/V Vent Valve, Breather Assembly, Float Check, Locking Ball Valves, Locks and Keys
9948	Breather Assembly
996123	Ball Valve 1"
996124	Brass Lock for Ball Valve
996125	Key for Brass Lock