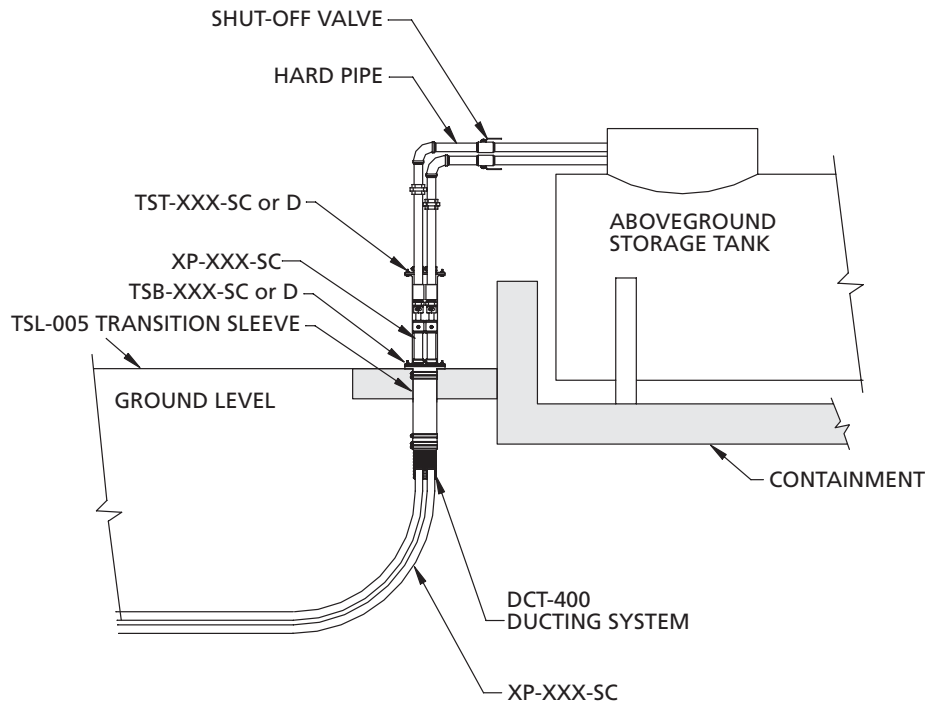




## Grade Level Transition Sleeve™

The Transition Sleeve is the practical, environmentally sound solution for above/below ground supply of generator or boiler applications from remote storage tanks. Steel piping enters the sleeve through APT special flexible Dual Entry Boots. It is an economical alternative that allows a straight forward installation with no special tools.



### Design Highlights & Advantages

- Transition sleeve provides the transition for above and below ground level.
- Transition sleeve provides the transition of APT pipe to steel pipe.
- May be additionally used for through-wall installation, above or below ground.
- Low cost alternative to the AST-2922 Transition Sump.
- Designed to utilize APT's Dual Entry and ducted boots.
- Split design allows aboveground spill or leak containment. Ready access for maintenance or replacement of joint hardware and pipe.
- The Transition Sleeve can accommodate both ¾" and 1" or combination of both in one run for fill/feed generator applications.



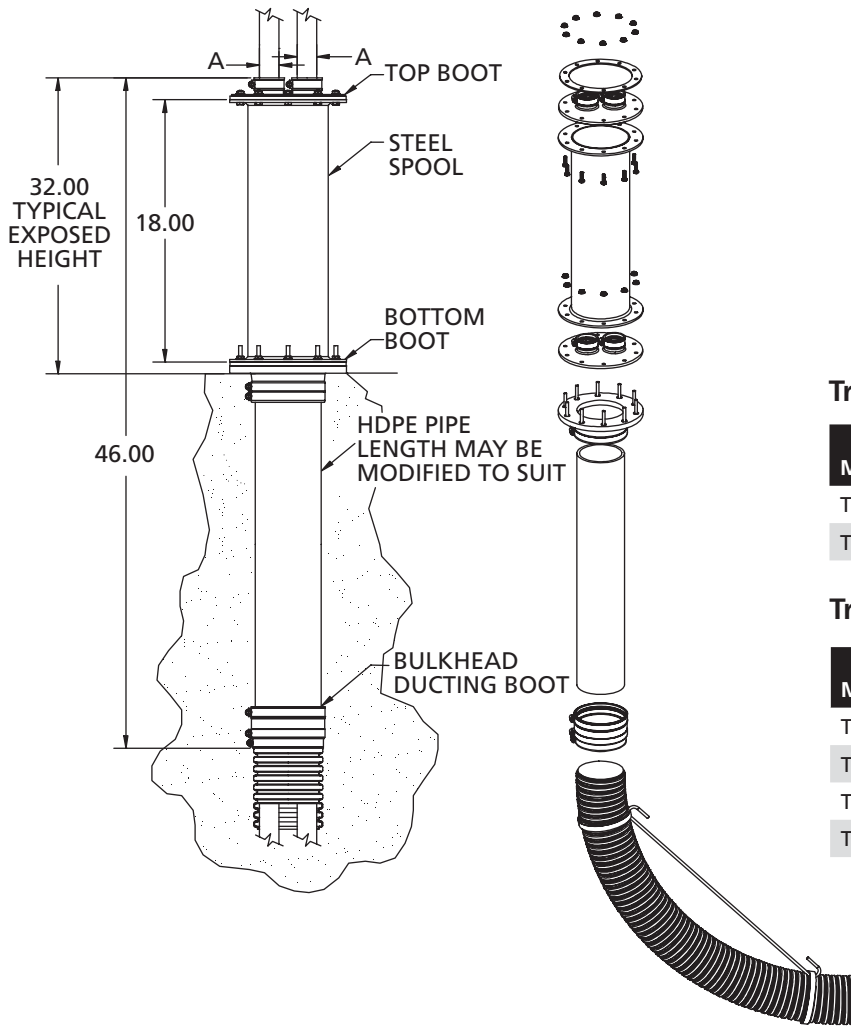
MODEL	DESCRIPTION
TSL-005	Transition Sleeve (Top and Bottom Boot Assembly REQUIRED, sold separately)

MODEL	DESCRIPTION (TOP BOOT ASSEMBLY)
TST-075-D	Transition Sleeve Top Flexible Entry Boot, ¾" steel pipe
TST-100-D	Transition Sleeve Top Flexible Entry Boot steel pipe

MODEL	DESCRIPTION (BOTTOM BOOT ASSEMBLY)
TSB-075-D	Transition Sleeve Bottom Flexible Entry Boot for P-075-D
TSB-075-SC	Transition Sleeve Bottom Flexible Entry Boot for P-075-SC
TSB-100-D	Transition Sleeve Bottom Flexible Entry Boot for XP-100-D or 1" conduit
TSB-100-SC	Transition Sleeve Bottom Flexible Entry Boot for XP-100-SC



## Grade Level Transition Sleeve™



### Transition Sleeve Assembly

TSL-005 includes:

- Transition Sleeve Spool 5" I.D.
- HDPE Pipe 18" Length 4" I.D.
- Bulkhead Ducting Boot
- Hose Clamps
- Blue Corrugated Ducting 48" Length
- ¼" Formed Steel Rod
- Installation Instructions

### Transition Sleeve Top Boot Assembly

MODEL	DIM. "A"	MOUNTING HOLE SIZE	MTG. STUDS
TST-075-D	1.05" or 1.32"	5.50"	10
TST-100-D	1.32" or 1.70"	5.50"	10

### Transition Sleeve Bottom Boot Assembly

MODEL	DIM. "A"	MOUNTING HOLE SIZE	MTG. STUDS
TSB-075-D	1.05"	5.50"	10
TSB-075-SC	1.32"	5.50"	10
TSB-100-D	1.32" or 1.70"	5.50"	10
TSB-100-SC	1.70"	5.50"	10

**NOTE:** The transition sleeve along with the top and bottom entry boot should be ordered separately.