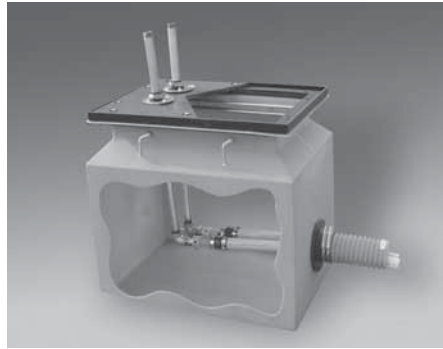
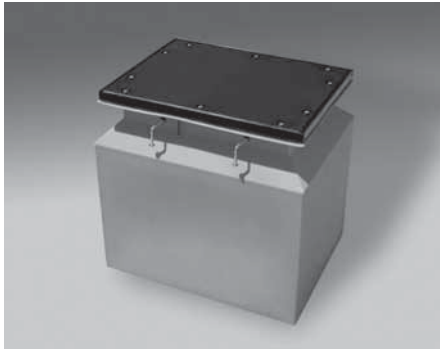




Grade Level Transition Sump

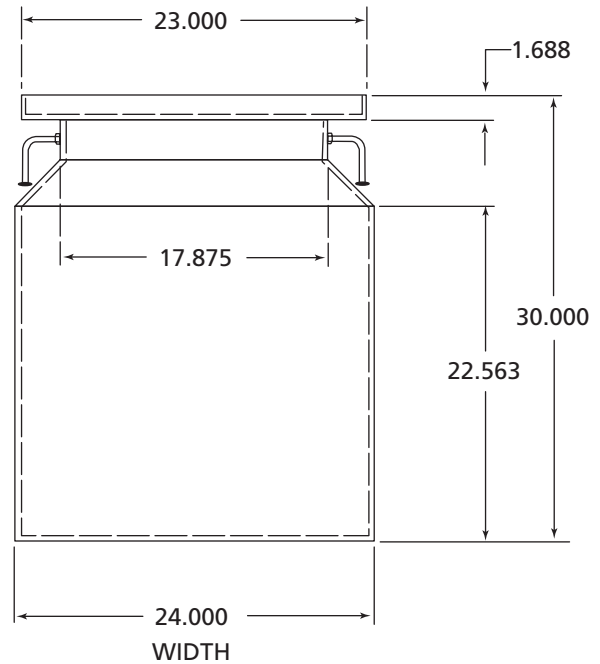
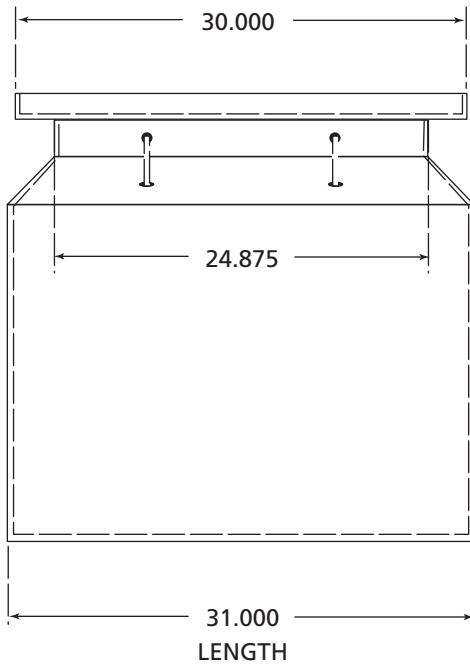
The AST above/below ground transition sump is the practical, environmentally sound solution for remote dispensing from above ground storage tanks. Steel and flexible piping enters the sump through APT's flexible entry boot. Inside the sump, the steel piping easily connects to flexible piping for a fuel tight, continuous run to dispensers or an intermediate sump.



Design Highlights & Advantages

- Transition sumps help meet environmental regulations by isolating metal piping from the soil.
- Transition sumps can be installed either inside or outside containment dikes.
- 30" burial depth allows the transition sump to be used as the system low point for leak detection.
- Load rated composite cover.
- Flexible entry boot provides a fuel tight and watertight seal around the metal piping and flexible piping as it enters the sump lid and sidewall.
- H-20 load rating. Pipe entries installed in lids will negate the load rating.

MODEL	DESCRIPTION
AST-2922	Aboveground storage tank transition sump
999-855-53	Replacement Gasket
252-029-22	Replacement AST-2922 lid (grey)
IP-400-B	Inspection Replacement Port-FEB style with replacement well cap



Above Grade Typical Application Drawing

