



Flexible Bulkhead Boots

APT bulkhead boots boast an enlarged gasket area to seal against the sump wall, and incorporate the proven advantages of APT standard flexible entry boot seal. The bulkhead boot requires only a single hole to be drilled for installation, reducing labor time and cost. APT offers a complete line of sizes for 1/2" through 2 1/2" single and secondary contained pipe. The 1 1/2" thru 2 1/2" sizes are also available in a ducted boot version to accommodate the use of APT DCT-400 corrugated ducting for easy retractability.



Design Highlights & Advantages

- Designed to be used with APT's product piping, the bulkhead boots are also ideal for use with rigid piping and electrical conduits.
- Flexible bulkhead boots available in sizes from 1/2" through 2 1/2". Ducted bulkhead boots available in sizes from 1 1/2" through 2 1/2".
- Boot size designations correspond directly to the pipe size being used.
- Any boot for a single wall pipe can be converted to a boot for a double wall pipe by simply removing the insert in the pipe opening.
- Bulkhead boots can be serviced from inside the sump eliminating the need for sump excavation.
- Made from oil and gasoline resistant nitrile rubber.

MODEL	DESCRIPTION (FLEXIBLE)
FBB-050-D	Flexible Bulkhead Boot for 1/2" electrical conduit
FBB-050-SC	Flexible Bulkhead Boot for 3/4" electrical conduit
FBB-075-D	Flexible Bulkhead Boot for P-075-D, 3/4" and 1" electrical conduit
FBB-075-SC	Flexible Bulkhead Boot for P-075-SC and 1" electrical conduit
FBB-100-D	Flexible Bulkhead Boot for XP-100-D
FBB-100-SC	Flexible Bulkhead Boot for XP-100-SC
FBB-150-D	Flexible Bulkhead Boot for XP-150-D
FBB-150-SC	Flexible Bulkhead Boot for XP-150-SC
FBB-175-D	Flexible Bulkhead Boot for XP-175-D
FBB-175-SC	Flexible Bulkhead Boot for XP-175-SC and 2" Fiberglass
FBB-200-D	Flexible Bulkhead Boot for XP-200-D
FBB-200-SC	Flexible Bulkhead Boot for XP-200-SC
FBB-250-SC	Flexible Bulkhead Boot for P-250-SC

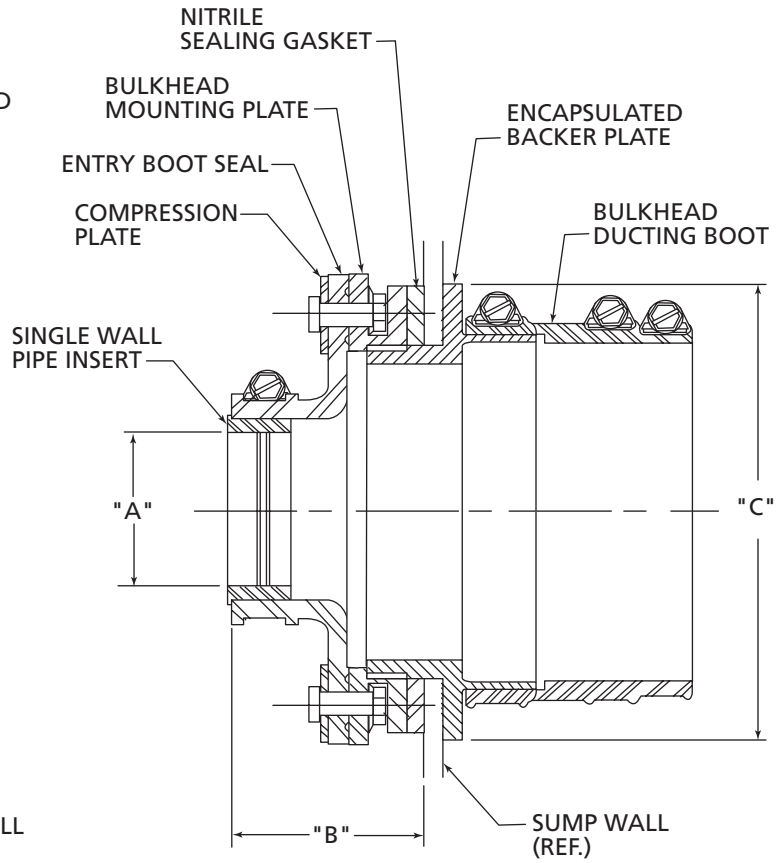
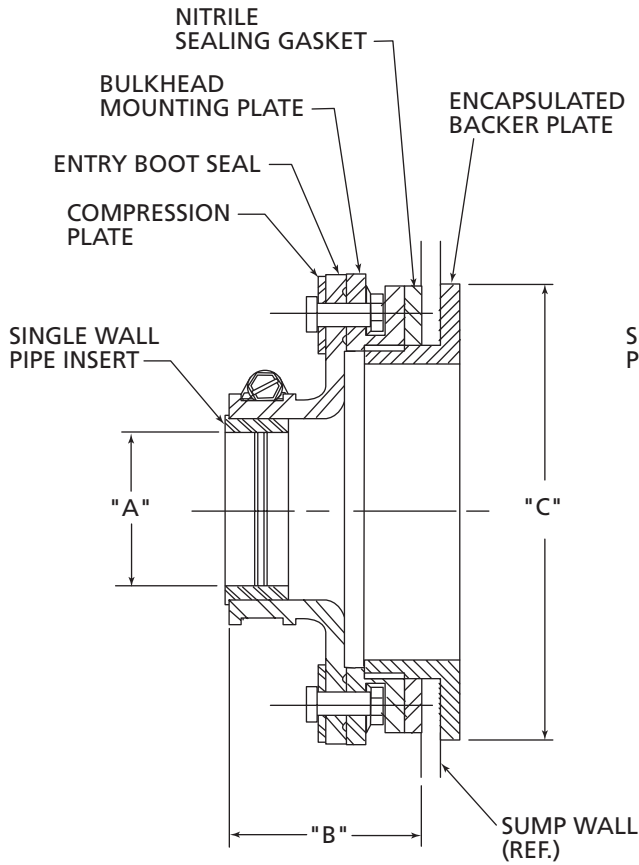
MODEL	DESCRIPTION (AIR TESTABLE)
DBB-150-DA	Ducted Bulkhead Boot for XP-150-SC
DBB-150-SCA	Ducted Bulkhead Boot for XP-150-SC
DBB-175-DA	Ducted Bulkhead Boot for XP-175-D
DBB-175-SCA	Ducted Bulkhead Boot for XP-175-SC

MODEL	DESCRIPTION (DUCTED)
DBB-150-D	Ducted Bulkhead Boot for XP-150-D
DBB-150-SC	Ducted Bulkhead Boot for XP-150-SC
DBB-175-D	Ducted Bulkhead Boot for XP-175-D
DBB-175-SC	Ducted Bulkhead Boot for XP-175-SC
DBB-200-D	Ducted Bulkhead Boot for XP-200-D
DBB-200-SC	Ducted Bulkhead Boot for XP-200-SC
DBB-250-SC	Ducted Bulkhead Boot for P-250-SC





Flexible Bulkhead Boots



Flexible Bulkhead Boots

MODEL	DIM. "A"	DIM. "B"	DIM. "C"	MTG HOLE SIZE
FBB-050-D	0.84"	2.50"	4.00"	2 3/8"
FBB-050-SC	1.05"	2.50"	4.00"	2 3/8"
FBB-075-D	1.05"	2.50"	4.00"	2 3/8"
FBB-075-SC	1.32"	2.50"	4.00"	2 3/8"
FBB-100-D	1.32"	2.50"	4.00"	2 3/8"
FBB-100-SC	1.70"	2.50"	4.00"	2 3/8"
FBB-150-D	1.75"	2.50"	6.00"	4 3/8"
FBB-150-SC	2.00"	2.50"	6.00"	4 3/8"
FBB-175-D	2.00"	2.50"	6.00"	4 3/8"
FBB-175-SC	2.40"	2.50"	6.00"	4 3/8"
FBB-200-D	2.50"	2.50"	6.00"	4 3/8"
FBB-200-SC	2.88"	2.50"	6.00"	4 3/8"
FBB-250-SC	3.24"	2.50"	6.00"	4 3/8"

Ducted Bulkhead Boots

MODEL	DIM. "A"	DIM. "B"	DIM. "C"	MTG HOLE SIZE
DBB-150-D	1.75"	2.50"	6.00"	4 3/8"
DBB-150-SC	2.00"	2.50"	6.00"	4 3/8"
DBB-175-D	2.00"	2.50"	6.00"	4 3/8"
DBB-175-SC	2.40"	2.50"	6.00"	4 3/8"
DBB-200-D	2.50"	2.50"	6.00"	4 3/8"
DBB-200-SC	2.88"	2.50"	6.00"	4 3/8"
DBB-250-SC	3.24"	2.50"	6.00"	4 3/8"

Air Testable

MODEL	DIM. "A"	DIM. "B"	DIM. "C"	MTG HOLE SIZE
DBB-150-DA	1.75"	2.50"	6.00"	4 3/8"
DBB-150-SCA	2.00"	2.50"	6.00"	4 3/8"
DBB-175-DA	2.00"	2.50"	6.00"	4 3/8"
DBB-175-SCA	2.40"	2.50"	6.00"	4 3/8"