

---

## 1250 Batch Programming Instructions

---

### ***I. Purpose:***

- To instruct technicians in uploading, editing, saving, and downloading a program parameter file to the model 1250.

### ***II. Scope:***

- This procedure applies to all INCON model 1250s built after serial number 75000 that are equipped with the “-S” serial RS-232 option. Units built prior to that serial number do not have the software on board to facilitate this procedure.

### ***III. Associated Documents or Data:***

- 000-1077 1250 Installation and Programming Manual

## **Procedure:**

### ***Setup:***

- 1.1 Connect the serial cable provided with your 1250 to the card edge protruding from the back of the 1250 case, the red stripe faces the outside of the case. Connect a null modem adaptor to the cable’s DB25 connector. Connect you computer to the null modem adaptor using gender and connector adaptors as needed.
- 1.2 Turn on power to the 1250 and to the computer. Start up the Windows HyperTerminal program. HyperTerminal is available on Windows 95 and later versions. It can be run by clicking on the “Start” button, select “Programs”, select “Accessories”, select “Communications”, choose the “HyperTerminal” folder, click the HyperTerminal (\*.ht) file.
- 1.3 Enter the 1250’s programming mode. Select **OP 51 / RS232** from the menu and enter. Change the value to “4” and enter. This allows the 1250 to be programmed through the serial port. Exit the programming mode by selecting **OP 0 / run** from the menu and enter. The 1250 should transmit an identification string:

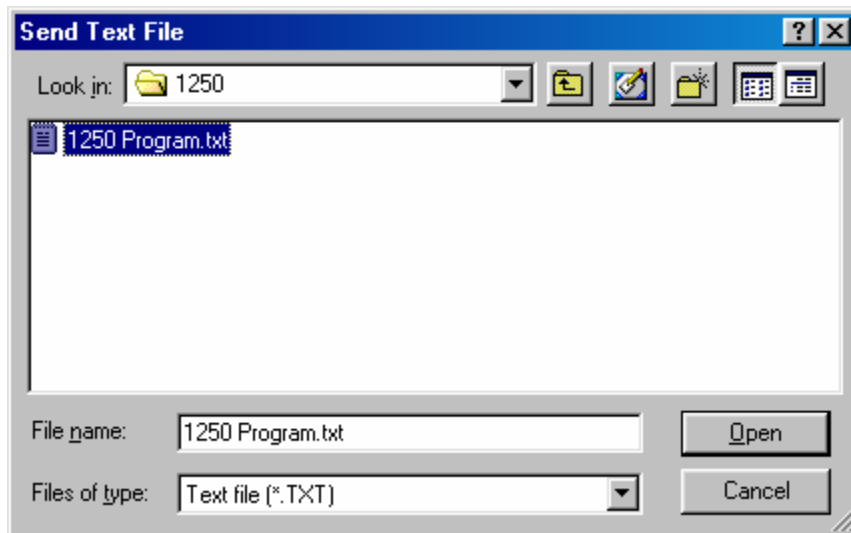
BIOS rev. 1.00  
1250B rev. 1.03  
Command line rev. 1.00

Type the “**setup**” command. The display on the 1250 should read “**SEtuP**”.



**Downloading a Program:**

- 3.1 From HyperTerminal type the “**setup**” command. The display on the 1250 should read “**SEtuP**”.
- 3.2 Click on the “**Transfer**” button at the top of the screen.
- 3.3 Select “**Send Text File**”. A window will open where you can enter the filename of the program text file.
- 3.4 Type the path to the program text file or browse to it. When the correct filename and path is entered, click on “**Open**”. The program should be downloaded to the 1250.



- 3.5 The program text will be displayed on the HyperTerminal screen if successfully downloaded. If there was an error in the program text or in downloading it to the 1250, there will be an error message displayed on the HyperTerminal screen.
- 3.6 Type the “**run**” command. The 1250’s display should return to the normal run mode, showing position information.
- 3.7 Verify correct programming by testing the 1250 for proper functionality.
- 3.8 Disconnect the serial cables.
- 3.9 Additional 1250’s may be batch-programmed by following steps 3.1 through 3.8.

Note: For technical assistance call INCON Technical Service at (800) 984-6266.

