

Service Station Hardware

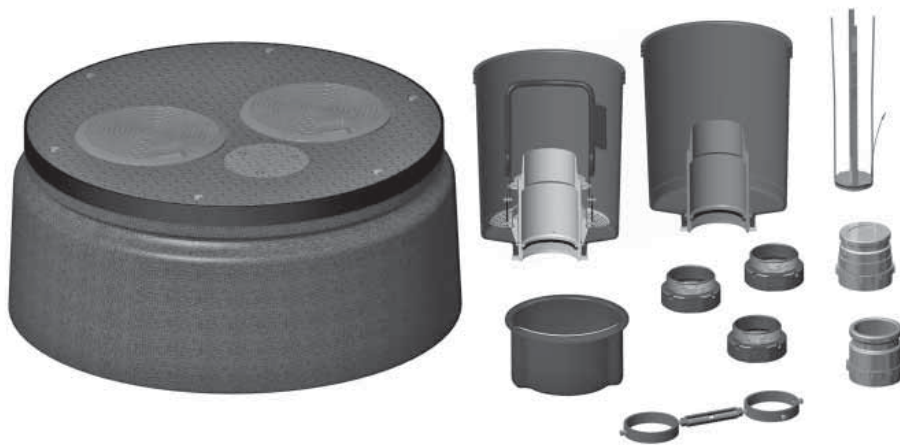
EVR Phase 1 Packages

Kit includes all Phil-Tite manufactured items to comply with CARB EVR Phase I requirements for a multiport installation.

PHIL-TITE

Certifications/Listings

* EVR Phase 1 Certification VR-101



PART	DESCRIPTION
M36-EVR-3	Includes parts listed below
M36-EVR-3-SPR	Same as M36-EVR-3 with plow ring
M42-EVR-4	Includes parts listed below

Requires installation tool kit T-7043. See installation tools on page 88.

Multiport EVR Package Contents

PART	DESCRIPTION	QUANTITY	
		EVR-3	EVR-4
SEE Pg. 51	M36-2C-0-1-NPR M42-4C-0-1-NPR	1	1
PP-1005-TB	Debris collector	1	2
85100-1	Replacement bucket, fill with drain valve	1	2
85101-1	Vapor replacement spill collector, without drain valve	1	2
SWF-100-B	Swivel fill adaptor	1	2
SWV-101-B	Vapor swivel adaptor	1	2
M/F 4 x 4	4" x 4" riser adaptor	3	5
TBP-3516	Tank bottom protector	1	0
M-1600	Riser support bracket	1	4