

# AIR-OPERATED SEQUENTIAL VAPOR VALVES



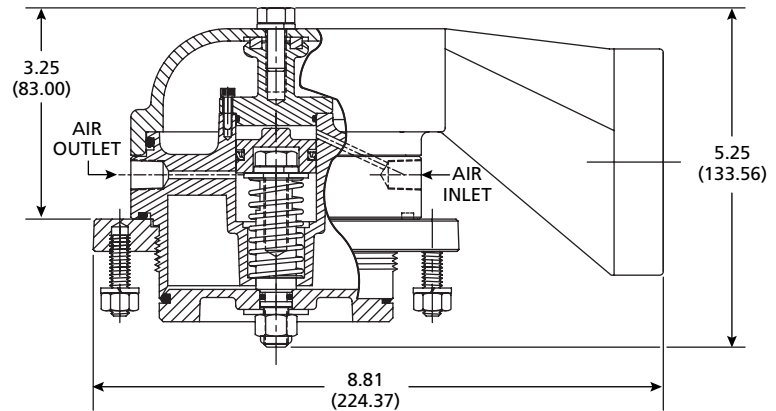
Handle fuel vapors safely and efficiently with this lightweight aluminum vapor valve. The air-operated valve allows fast vapor flow during loading and unloading. The poppet is designed to open into the tank, preventing accidental leakage from product surges or from a tank truck rollover. Easy-to-use air line connections are located outside the compartment for convenient installation and maintenance. The 3.5-inch vapor valve comes with male NPT threads or a TTMA flange for installation in conventional 16- or 20-inch manholes.

Also available as an option is a Betts Vapor Vent Replacement Kit Hood Adapter to make replacing an existing Betts unit with an EBW unit as simple as possible.

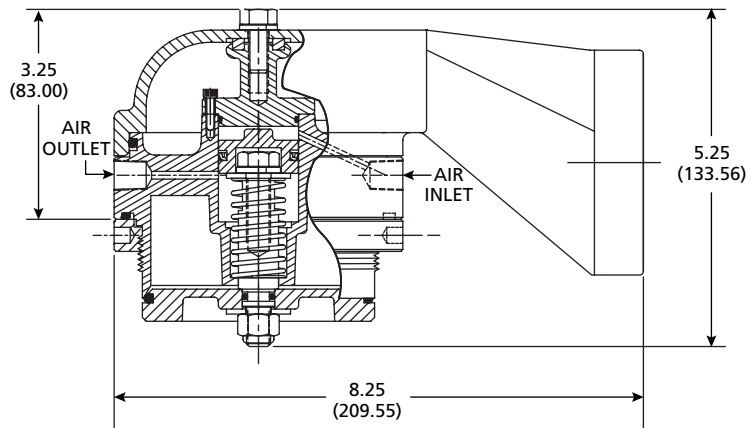
## Features

- Lightweight aluminum body and hood.
- Fluorocarbon seal.
- TTMA specifications.

880-343-01



880-345-01

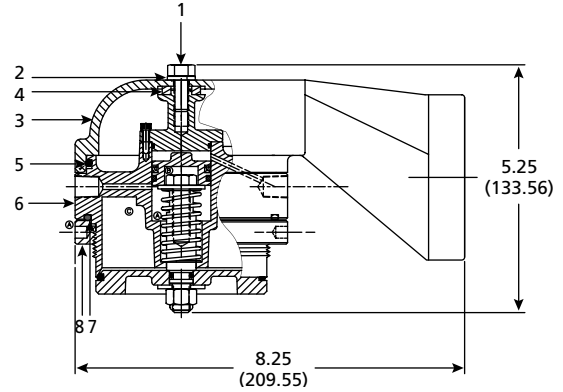
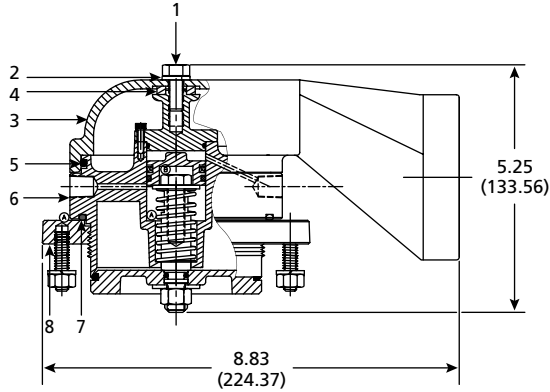




**Air-Operated Sequential Vapor Valve Parts List**

880-343-01

880-345-01



#	PART NAME	PART NUMBER	#	PART NAME	PART NUMBER
1	Hex Head Cap Screw	11176-18	5	O-ring Lube	11123-01
2	Stainless Steel Lockwasher Springs	11177-02	6	Sequential Vapor Valve Body Assembly	880-344-01
3	Vapor Recovery Valve Hood	880-378-02	7	O-ring	11003-26
4	Square Cut Seal Ring	11034-03	8	Mounting Assembly Flange	880-267-01

PART NUMBER	DESCRIPTION
880-341-01	Flanged without Hood for 16" Manhole
880-342-01	Threaded without Hood for 20" Manhole
880-343-01	Flanged with Hood for 16" Manhole
880-344-01	Vent Valve Only
880-345-01	Threaded with Hood for 20" Manhole
90067	Betts Adapter Kit