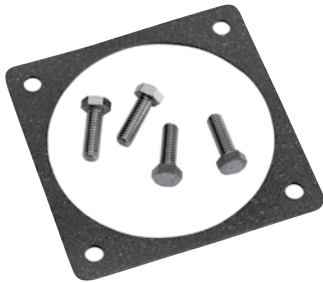




**Gasket Kit\***

880-248-01



<b>MODEL UNIT</b>	<b>880-248-01</b>
Weight (Pounds/Kilograms)	6.0/0.17

**Sight Glass Kit\***

880-249-01



<b>MODEL UNIT</b>	<b>880-249-01</b>
Weight (Pounds/Kilograms)	13.0/0.37

**2" Cam & Groove Adapter\***

880-395-01



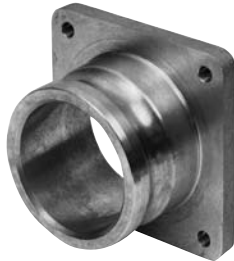
<b>MODEL UNIT</b>	<b>880-395-01</b>
Weight (Pounds/Kilograms)	1.06/0.48

\*All items are optional and must be ordered separately.



## 3" Cam & Groove Adapter

880-396-01



MODEL UNIT	880-396-01
Weight (Pounds/Kilograms)	1.19/0.45

## 4" Cam & Groove Adapter

880-284-01



MODEL UNIT	880-284-01
Weight (Pounds/Kilograms)	1.44/0.65

## 3" NPT Male Adapter

880-397-01



MODEL UNIT	880-397-01
Weight (Pounds/Kilograms)	1.44/0.65

## 4" NPT Male Adapter

880-289-01



MODEL UNIT	880-289-01
Weight (Pounds/Kilograms)	1.50/0.68