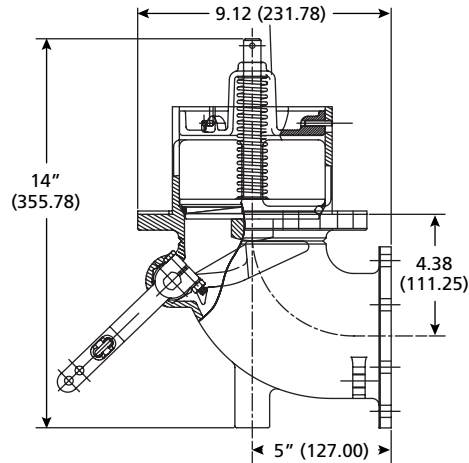
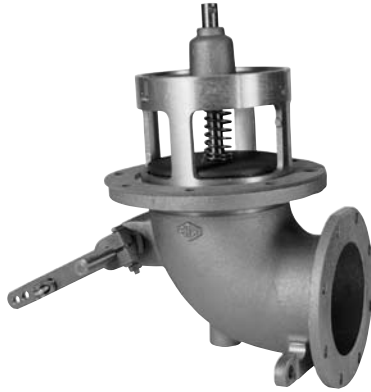




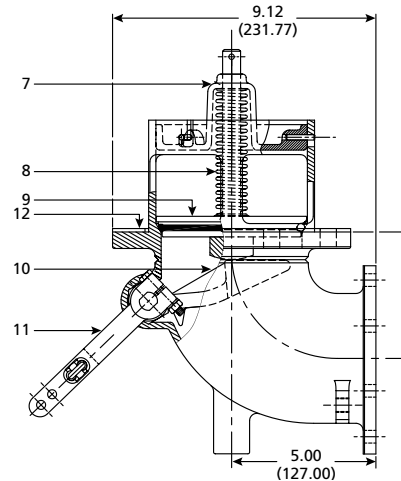
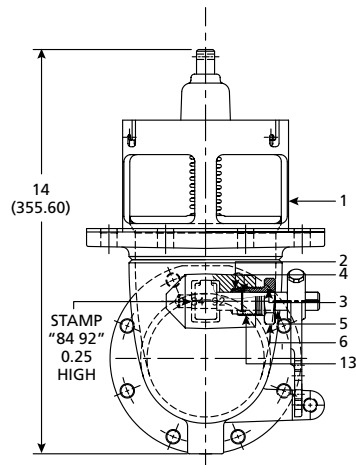
Mechanically Operated 90 Degree Emergency Valve (Flanged)

880-431-01



MODEL UNIT	880-431-01
Weight (Pounds/Kilograms)	11.0/4.99

Mechanically Operated 90 Degree Emergency Valve (Flanged) Parts List



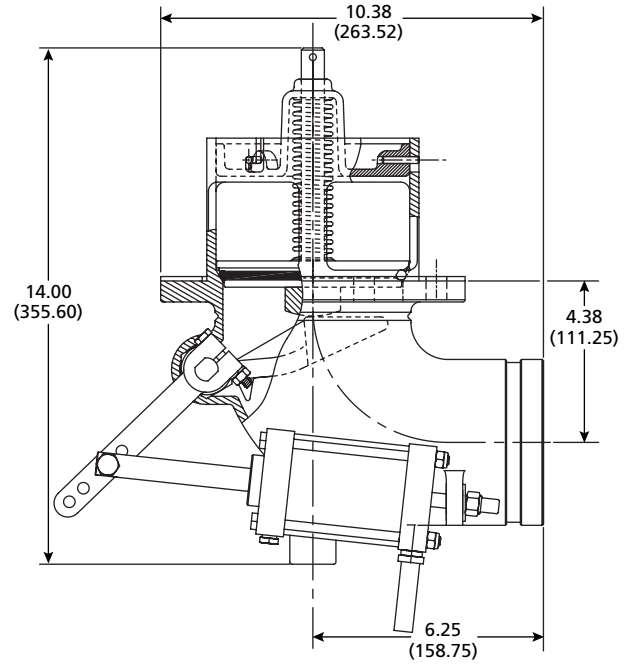
#	PART NAME	PART NUMBER	#	PART NAME	PART NUMBER
1	Emergency Valve Flanged 4" Body	880-429-01	8	Poppet Spring	1135701
2	3/16" SYN PTFE Packing	1135801	9	Poppet Assembly	880-263-01
3	O-ring FLC #2-114	1103920	10	Cam	880-233-01
4	Spirol Retaining Ring	1109008	11	Cam Lever Assembly	880-265-01
5	Cam Shaft	880-241-01	12	Emergency Valve Sump Gasket	1138801
6	Stuffing Box Nut	880-242-01	13	Anti-seize Lubricant	1114401
7	Emergency Valve Retainer Assembly	880-264-01			

PART NUMBER	DESCRIPTION
880-431-01	4" Standard Flanged Outlet Seal



Air Assisted 90 Degree Emergency Valve (VICTAULIC)

880-432-01



MODEL UNIT	880-432-01
Weight (Pounds/Kilograms)	13.0/5.9