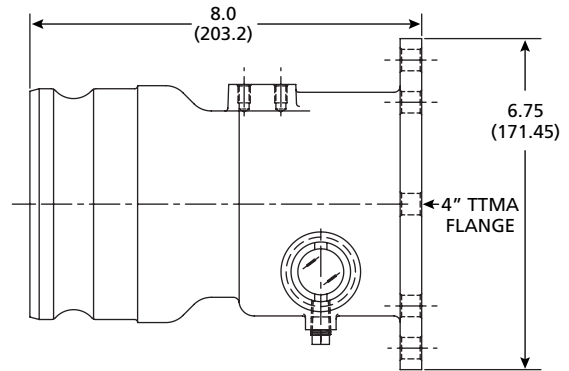




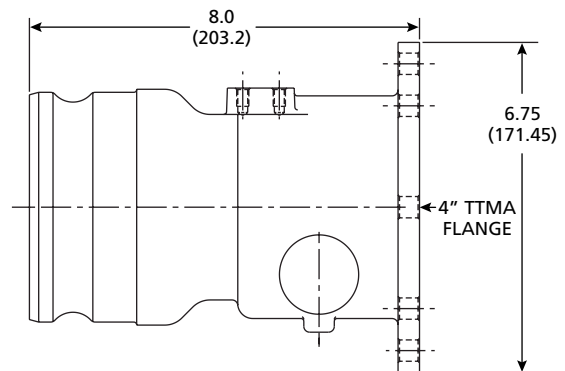
## Flanged Vapor Check Valve

The sight glasses featured on this vapor recovery fitting can help detect liquid accumulation in the vapor manifold of a transport. A drain plug lets any extra fuel drain out, and the poppet prevents vapors from escaping when disconnected from the hose. A low pressure drop makes flow rates faster and vapor recovery safer. The adapter is constructed with a standard 4-inch TTMA flange, a 4-inch cam and groove, and a mounting pad for the Air Interlock Valve.

### 302-300-01



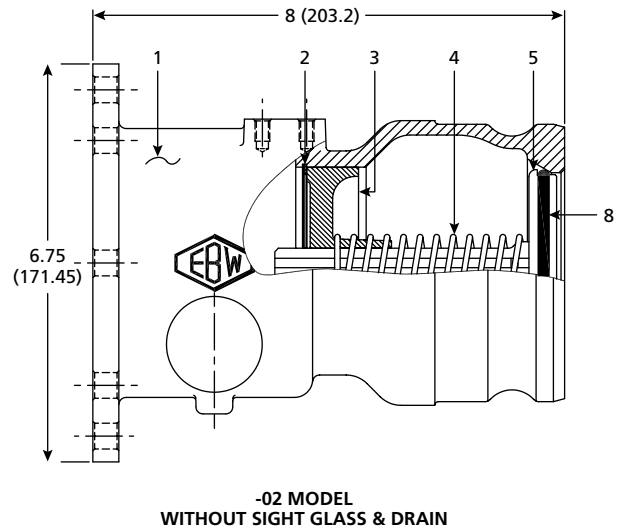
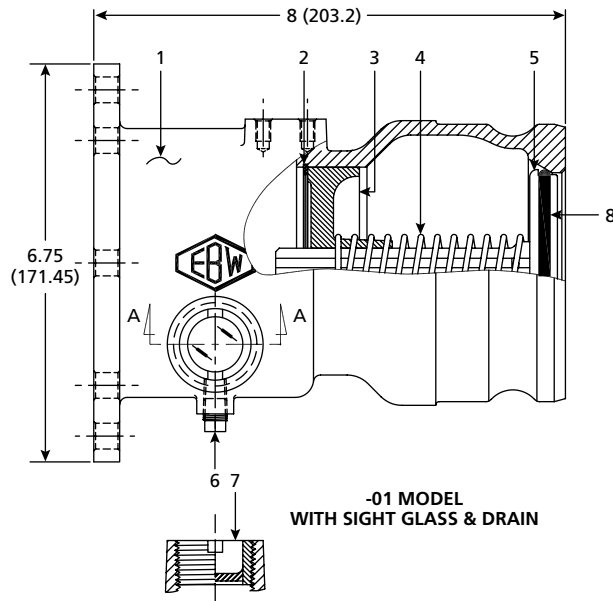
### 302-300-02



MODEL UNIT	302-300-01	302-300-02	302-400-02
Size (Inches/Millimeters)	4.00/101.6	4.00/101.6	4.00/101.6
Weight (Pounds/Kilograms)	6.00/2.72	6.00/2.72	6.00/2.72



## Flanged Vapor Check Valve Parts List



#	PART NAME	PART NUMBER	#	PART NAME	PART NUMBER
1	Vapor Recovery Body	302-400-01	5	4" Poppet Vapor Recovery Adapter	300-203-01
2	Retaining Ring	11090-02	6	Pipe Plug	11010-02
3	Poppet Stem Guide	300-205-01	7	Sight Glass	11215-04
4	Poppet Spring	300-105-01	8	O-ring	11039-15

PART NUMBER	DESCRIPTION
302-300-01	Flanged Vapor Check Valve with Sight Glass
302-300-02	Flanged Vapor Check Valve without Sight Glass
302-400-02	Flanged Vapor Check Valve without Sight Glass, No Poppet