

# Model 600 Nozzle

## 405231901 Diaphragm Cover Kit

### Installation

Use this kit to replace the diaphragm and cover in a Healy model 600 nozzle.

#### Parts List

Item	Description
1	Cover Screws (4)
2	Lock Washers (4)
3	Cover Assembly
4	Spring
5	Diaphragm Assembly

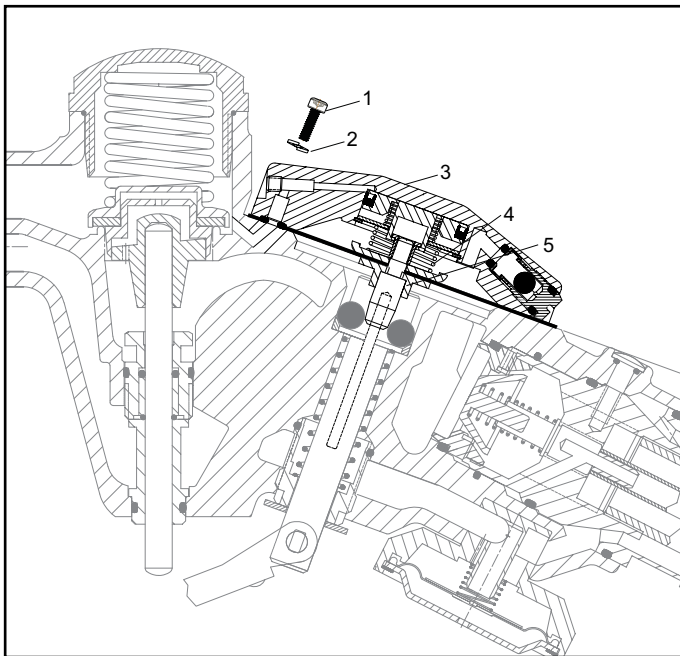


Figure 1: 600 Nozzle Cross-Section View

#### Tool List

- T27 Torx® Screw Driver

When working with petroleum equipment, make sure to follow all local safety and installation regulations.

Before working on the nozzle, remove it and make sure all gasoline is drained.

#### Preparation

Before removing the diaphragm cover, assemble the cover components.

1. Put the Spring (item 4) on the cover assembly (item 3, Figure 2).



Figure 2: Cover Spring in Position

2. Put the diaphragm assembly over the spring and connect the diaphragm assembly to the cover assembly by pushing the assembly down and sliding over to engage the cover assembly (Figures 3 and 4).



Figure 3: Attach Diaphragm Assembly



Figure 4: Diaphragm Installed in Cover

## Replace Existing Diaphragm

1. Pull the lever and hold it in the UP position.

**IMPORTANT!** Tape the handle in the Up position. It must not be released during this procedure.



**Figure 5: Handle Held Closed Using Tape**

2. Remove the four screws and lock-washers (items 1 and 2, Figure 5).



**Figure 5: Remove Cover Screws**

3. Remove the Cover Assembly (item 3). The diaphragm assembly will also be removed.

Note: Three metal balls are held in the lower shaft. Keep the lever raised to make sure the metal balls are held in this position (Figure 6).

**Note: If the metal balls are not held in this position, the nozzle will be non-functioning and must be discarded!**



**Figure 6: Metal Balls in Position**

4. Install the new cover/diaphragm assembly (Figure 7).



**Figure 7: Installing Cover/Diaphragm**

5. Remove the tape from the handle and release the lever to allow the cover to seat properly.
6. Reinstall the cover screws and lock-washers.
7. Tighten the cover screws to 30-50 inch-pounds (3.4 to 5.6 Nm) of torque (Figure 8).



**Figure 8: Tighten Cover Screws**

8. Operate the lever to make sure it moves freely.
9. Verify operation by the following:
  - Pressurize the nozzle and inspect for leaks around the cover
  - Check that the lever operates easily
  - The full-tank shut-off operates to shut off flow



**Franklin Fueling Systems**

www.franklinfueling.com

3760 Marsh Road • Madison, WI 53718, U.S.A.

Tel: +1 608 838 8786 • Fax: +1 608 838 6433

Tel: USA & Canada 1 800 225 9787 • Tel: México 001 800 738 7610

**Franklin Fueling Systems GmbH**

Rudolf-Diesel-Strasse 20 • 54516 Wittlich, GERMANY

Tel: +49-6571-105-380 • Fax: +49-6571-105-510