

Console DTU (Data Transfer Unit)

Installation Instructions

Overview

The TS-DTU will be installed in the dispenser when it is used as a Remote DTU or inside the building when used as a Console DTU. These installation instructions are to be used for installing the TS-DTU inside the building.

When used as a Console DTU, data is received from the Remote DTU units via power line communication. The data is then sent to the System Console (TS-550/5000/EMS) for processing. Unlike the Remote DTU units, the Console DTU will have no Intrinsically safe sensors connected to it.

Site Inspection

A licensed electrician should perform a site inspection before installing any equipment. The Console DTU must be connected to all electrical phases that supply power to dispensers containing Remote DTUs.

Check for any electrical isolation. Isolation between the electrical panel and the dispenser can result in poor or no communication with the DTU. Make sure there is not a power conditioner between the Console DTU and dispenser power.

Installation Procedure

Tools and Supplies Needed

• 1/2 " Cord grip/strain relief	• Small slotted screwdriver
• Multimeter	• Mounting screws
• 2-wire shielded cable	• 14 AWG wire (one for each phase and ground)

Step 1 – Remove System Power

Remove power from the TS-5XXX Series System Console and do NOT return power to the System Console or to the Console DTU until instructed to do so.



Electrical Hazard! Always disconnect power supplies before installing or servicing the console TS-DTU. Use proper lock-out and tag-out procedures to ensure no power is accidentally applied to the system. Failure to do so could result in severe injury or death.

Step 2 – Mounting the Console DTU

Mount the Console DTU as close to the circuit breaker panel that is supplying the dispenser(s). Remove the cover and insert a screw (not supplied) into each of the four corners of the enclosure. Mount the unit to the wall. You may optionally use the supplied mounting brackets.

Step 3 – Power Connection

The Console DTU may use the same circuit breaker as the System Console but **DO NOT** connect the power for the Console DTU inside the Console enclosure. Install a junction box or wire the Console directly to the circuit breaker panel.

Ideally, the circuit selected for the console power will be on the same phase as all dispensers and no further power connections will be required. If any dispensers are on a different phase, run wires from the L2 and L3 connections on the Console DTU to the appropriate circuit breakers for the required extra phases. If there is any question about what phase some of the dispensers are on, it is recommended to connect all three phases to the Console DTU.

Connect the neutral for the Console DTU to the same neutral supplying the dispensers. If there is not a clean neutral return for the DTU then poor quality may result.

Warning: Cycling power to the Console DTU without powering off the System Console will cause the System Console to reboot.

Installer must use conduit for connecting the DTU on the power connection side.

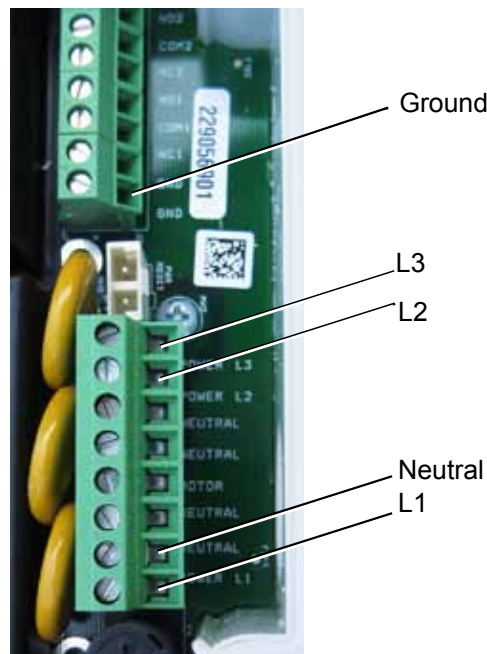


Figure 1: Power Connections to the Console DTU

Step 4 – Bus Termination Jumper Removal

The Console DTU will provide system bus termination when installed and running. Therefore the system bus termination currently provided by the Power Supply Module needs to be removed. Refer to the TS-5XXX Series Installation Guide for instructions on how to remove a module.

Be extremely careful when removing the power supply module so it does not rub against any other part of the system. After it is removed from the system, locate the system bus termination jumper JP1 and remove it (Figure 2).

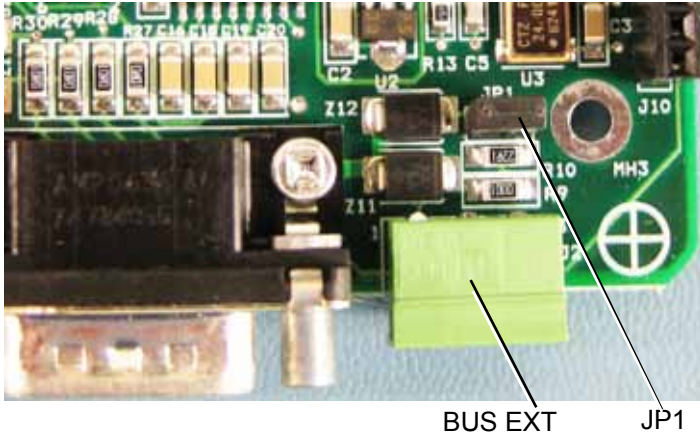


Figure 2: JP1 Location on the Power Supply Module

Re-Install the power supply module, securing it properly in place and replace the communication bracket as required.

Step 5 – Data Connection

The Console DTU acts as an external System Console module and therefore must be connected to the system bus. This is made possible via the external BUS EXT connection, located on the power supply module.

The bus connection requires 2-wire shielded cable and FFS recommends Belden 87761. On the Console DTU, the cable enters through the Intrinsicly Safe (I.S.) opening but is connected outside of the I.S. area, which is not used in the Console DTU. Therefore the I.S. shield will need to be removed and discarded. Secure the bus cable on the Console DTU side using a cord grip.

On the System Console communications bracket, locate the BUS EXT connector (Figure 4). The connector is removable for convenient wiring. Refer to the following table and make the proper BUS (HIGH, LOW, GND) connections (Figure 3). To make the necessary connections between the System Console and the DTU, plug the BUS EXT connector back into the System Console. Secure the bus cable so it is not accidentally disconnected.

Belden Cable	BUS EXT	Console DTU Connection
Red Wire	HIGH	HIGH
Black Wire	LOW	LOW
Shield	GND	GND

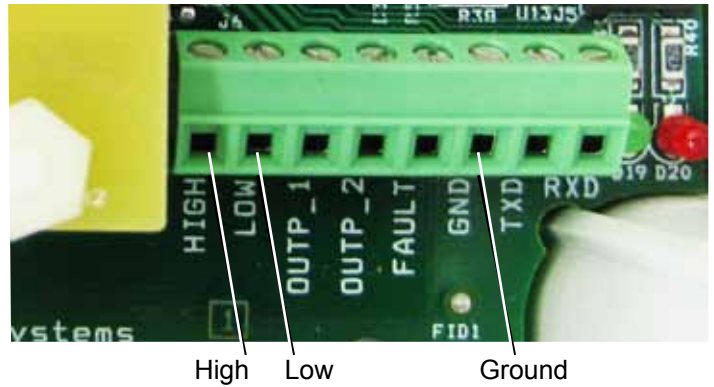


Figure 3: Console DTU BUS EXT Connection

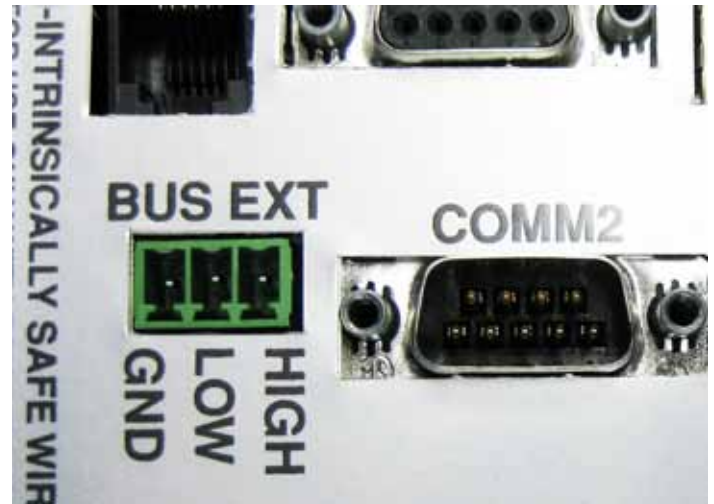


Figure 4: Console Side BUS EXT Connection

Step 6 – Review All Connections

Review power and data connections and make sure the cable is attached securely. Finally replace the Console DTU Cover.

Step 7 – Power Up

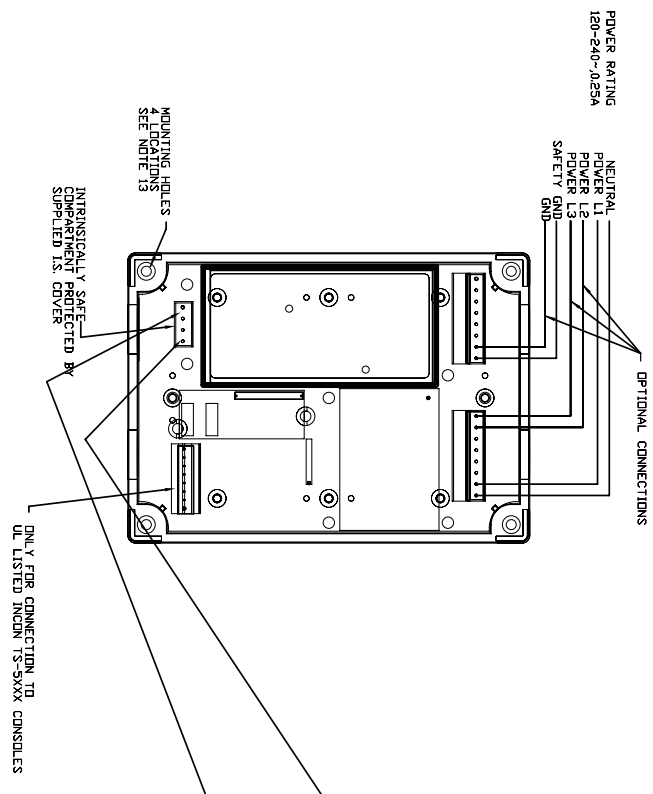
Return power to the System Console and the newly installed Console DTU.

Related Documents

- 000-2146 DTU Dispenser Retrofit Manual
- 000-2142 T5 Console Programming Manual, rev D or higher
- 000-2150 T5 Installation Manual
- 000-2058 VRM IOM manual rev C or higher

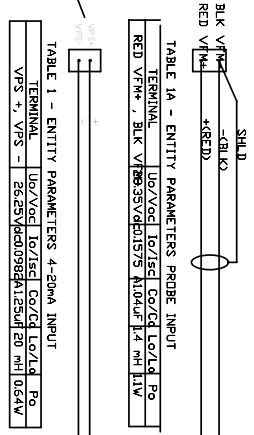
- NOTES
- 1) THE MODEL TS-DTU/P SHALL NOT BE CONNECTED TO ANY EQUIPMENT WHICH USES DR GENERATES GREATER THAN 250V.
 - 2) EACH GROUND TERMINAL SHALL BE CONNECTED TO A SUITABLE SYSTEM EARTH GROUND. THE DC RESISTANCE BETWEEN GROUND TERMINALS AND EARTH GROUND SHALL BE LESS THAN 1 OHM.
 - 3) THE MODEL TS-DTU/P WIRING SHALL BE INSTALLED IN ACCORDANCE WITH THE APPLICABLE NATIONAL OR LOCAL CODES. CONDUCTORS OF DIFFERENT INTRINSICALLY SAFE CIRCUITS RUN IN THE SAME CABLE/CONDUIT MUST HAVE AT LEAST 1 DESIGN OF INSULATION.

- 4) CAPACITANCE AND INDUCTANCE OF THE FIELD WIRING FROM THE INTRINSICALLY SAFE EQUIPMENT TO THE CABLE SHALL BE LIMITED TO 100 PICO FARADS PER FOOT AND 100 MICRO HENRYS PER FOOT. IN TABLE 1, 1A, CABLE CAPACITANCE (C) SHALL BE PRINTED IN THE SAME COLUMN AS THE INDUCTANCE (L). CAPACITANCE (C) SHALL BE PRINTED IN THE SAME COLUMN AS THE INDUCTANCE (L) AND L₀, RESPECTIVELY. WHERE THE CABLE CAPACITANCE AND INDUCTANCE PER FOOT ARE NOT KNOWN, THE FOLLOWING VALUES SHALL BE USED: C=60pF/ft., (200pF/m) L=82uH/ft (0.24uH/m).
- 5) WIRING, CABLING AND SEALS MUST BE INSTALLED IN ACCORDANCE WITH THE NEC, DEC OR OTHER APPLICABLE NATIONAL OR LOCAL CODES.
- 6) USE ONLY CABLE THAT IS SPECIFIED IN USER INSTALLATION MANUAL OR LISTED EQUIVALENT FOR THE INSTALLATION OF LIQUID LEVEL PROBES.



- 7) USE THE FOLLOWING WIRE TYPES:
 FOR I.S. WIRING USE 18AWG MINIMUM DIL AND GASOLINE RESISTANT TYPES, TFFN, THWN, THHN, FOR POWER AND GROUND WIRING.
 POWER L1 AND NEUTRAL - USE 4 AWG OR LARGER.
 POWER L2 AND NEUTRAL - USE 4 AWG OR LARGER.
 SAFETY GROUND - USE 1/2 AWG OR LARGER.
 FOR TS-3XXX WIRING SEE NEC ARTICLE 725 FOR CABLE TYPES OR USE AWM STYLE 2464 OR 2576.
- 8) ONLY USE GRAMP TYPE CONNECTORS FOR ELECTRICAL CONNECTIONS.
 DO NOT USE WIRE AND CONDUIT TYPES NOT LISTED IN THE GENERAL CONNECTORS WITH EPOXY SEAL - PACKS.
- 9) SEE INSTALLATION MANUAL FOR MORE DETAIL.
- 10) SEE INSTALLATION MANUAL FOR WIRE DETAIL.
- 11) THE GENERAL CONNECTORS MUST SUPPLY THE SPECIFIED WIRE.
- 12) THE ENTITY CONCEPT ALLOWS THE USER TO IDENTIFY ACCEPTABLE COMBINATIONS OF INTRINSICALLY SAFE APPARATUS AND ASSOCIATED APPARATUS THAT HAVE NOT BEEN EXAMINED AS A SYSTEM. EACH APPARATUS IS EXAMINED SEPARATELY BY A NATIONALLY RECOGNIZED TEST LABORATORY (NRTL) OR NOTIFIED IN TABLE 1, 1A. TO DETERMINE THE Vmax (V), Imax (A), CL, CI, AND LI VALUES THE CONTROL DRAWING FOR THE INTRINSICALLY SAFE APPARATUS SHALL BE USED. THE COMBINATION OF THE INTRINSICALLY SAFE APPARATUS AND ASSOCIATED APPARATUS MUST COMPLY WITH THE FOLLOWING:
 $V_{oc} \leq V_{max}$
 $I_{sc} \leq I_{max}$
 $P_{oc} \leq P_{max}$
 $L_{oc} \leq L_{max}$
 $C_{oc} \leq C_{max}$
 Po (Co) \leq Pi (Cmax) + Ecable
 Po (Co) \leq Pi (Cmax) + Ecable
 (SEE NOTE 4)

13) USE MOUNTING HOLES TO SECURE TS-DTU/P TO WALL OR MOUNTING BRACKET (SUPPLIED).



TO INTRINSICALLY SAFE APPARATUS

TO IWD WIRE 4-20mA INTRINSICALLY SAFE APPARATUS

CLASS 1, DIV 2, GROUP D OR
 NON-HAZARDOUS LOCATION
 MODELS TS-DTU/P
 ASSOCIATED APPARATUS
 ITEX IA1 IIA

HAZARDOUS LOCATION
 CLASS 1, DIV 1, GROUP D
 GROUP IIA, ZONE 0

REVISIONS	
NO.	DATE

UNLESS OTHERWISE SPECIFIED, ALL DIMENSIONS ARE IN INCHES (DIMENSIONS IN PARENTHESES ARE IN MILLIMETERS).

CONTR'L DRAWING
 TS-DTU/P

000-1724

DATE: 07/20/21

BY: JAMES

SCALE: 1"=1"

INCON INTERNATIONAL CORPORATION

12000 W. 10TH AVENUE, SUITE 200
 DENVER, CO 80202

© 2021 INCON INTERNATIONAL CORPORATION

ALL RIGHTS RESERVED

THIS DRAWING IS THE PROPERTY OF INCON INTERNATIONAL CORPORATION. IT IS TO BE USED ONLY FOR THE PROJECT AND NOT TO BE REPRODUCED, COPIED, OR TRANSMITTED IN ANY FORM OR BY ANY MEANS, WITHOUT THE PERMISSION OF INCON INTERNATIONAL CORPORATION.

INCON[®]



Franklin Fueling Systems

www.franklinfueling.com

3760 Marsh Road • Madison, WI 53718, U.S.A.

Tel: +1 608 838 8786 • Fax: +1 608 838 6433

Tel: USA & Canada 1 800 225 9787 • Tel: México 001 800 738 7610

Franklin Fueling Systems GmbH

Rudolf-Diesel-Strasse 20 • 54516 Wittlich, GERMANY

Tel: +49-6571-105-380 • Fax: +49-6571-105-510