

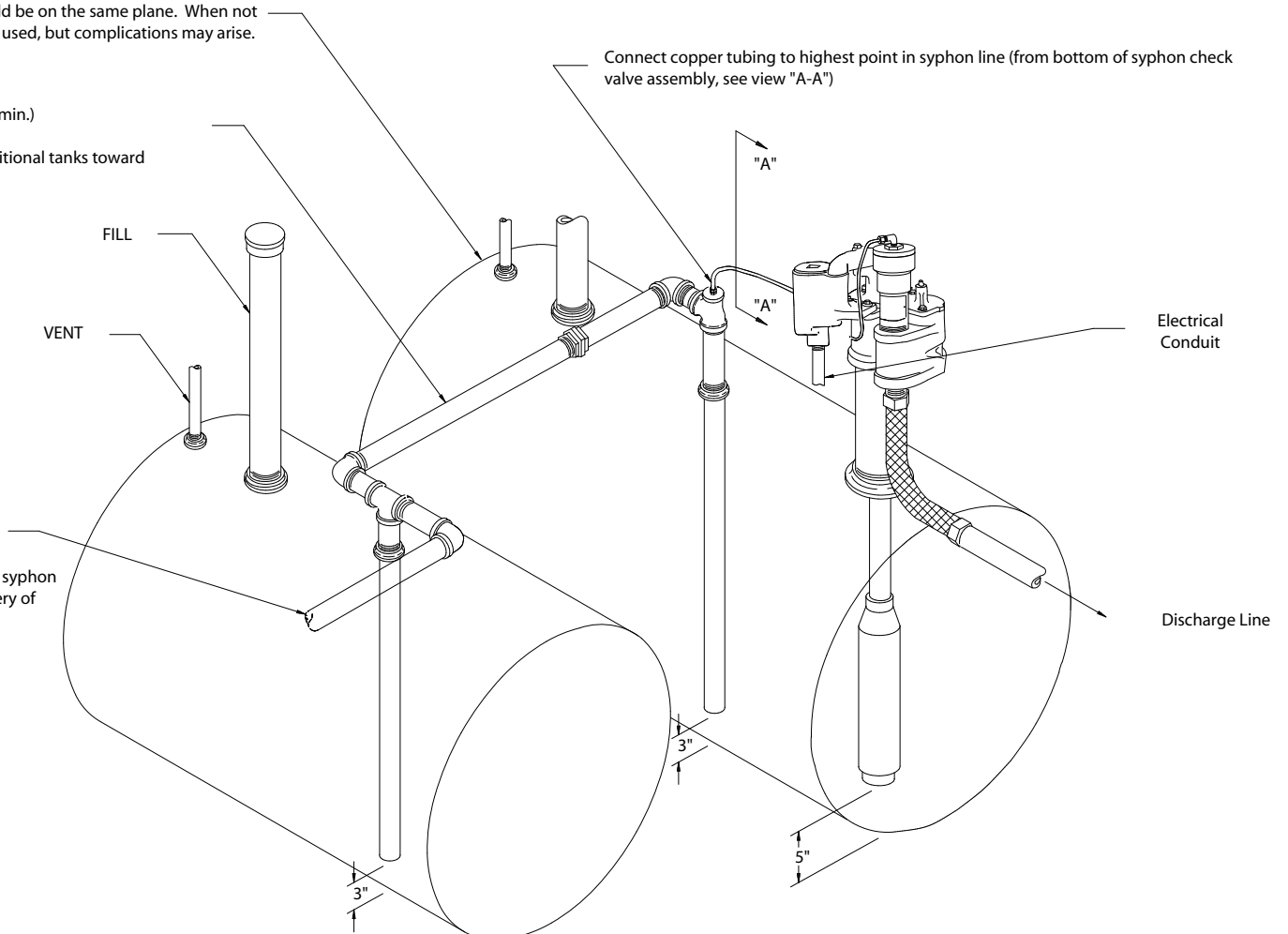
TYPICAL SYPHON SYSTEM

FOR SYPHON SYSTEM TESTING SEE SB005

Note:
Tanks should be of same diameter and should be on the same plane. When not possible, tanks of different diameters can be used, but complications may arise.

Syphon line (recommended 2" pipe min.)
Note:
Pitch upward 1/8" per foot from additional tanks toward submersible.

Connect copper tubing to highest point in syphon line (from bottom of syphon check valve assembly, see view "A-A")



From additional tanks where req.
Note:
When syphoning three or more tanks together, the submersible and syphon attached should be placed in the tank nearest the center of the battery of tanks.

Mechanical line leak detector
(vented to tank port)

Syphon check valve assembly
(into syphon port)

Copper tubing
(see main detail)

VIEW "A-A"

Note:
Installation must conform to applicable national, state, and local code requirements.

2 CHANGE TEXT 1 REVISION/RELEASE		REVISION DATE BY	DESCRIPTION DATE BY
FE PETRO			
TITLE SYPHON SYSTEM WITH INSTRUCTIONS		DRAWN DATE: 2/18/17	DRAWN BY DATE: 3/16/17
SCALE: NONE		SHEET: 1	OF: 1