

New Variable Length Coupler

In 1995, FE Petro first introduced Variable Length (VL) technology to submersible turbine pumps. Now, we have made an improvement to the design and are introducing a new one piece coupler. This new VL coupler uses one straight coupler with three setscrews to lock the column pipe in place.

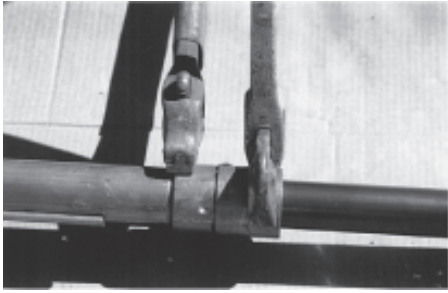


Figure 1 - Obsolete eccentric coupler in the unlocked position

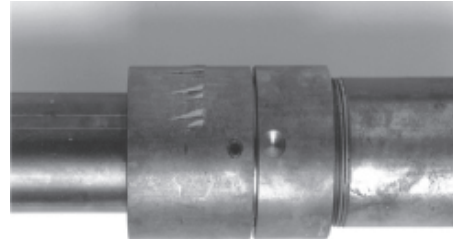



Figure 2 - Obsolete eccentric coupler in the locked position

This new design will result in a faster and easier installation. Once the column pipe has been extended to the correct length for the application, the setscrews need to be tightened. There is no longer a need for pipe wrenches to lock the coupler; therefore, the pump does not need to be held to prevent it from turning during locking. The new one-piece VL coupler incorporates an internal dual o-ring design to form a tight seal to the inner pipe. Also, if the length of the column pipe ever needs to be readjusted, the new VL coupler design makes this task easier as well.

Warning  **Highly flammable vapors or liquids may be present in the environment in which this equipment is installed or serviced. Installing or working on this equipment means working in an environment that presents risks of severe injury or death if instructions and standard industry practices are not followed. Follow all applicable codes governing the installation and servicing of this product and the entire system. Always lock out and tag electrical circuit breakers while installing or servicing this equipment and related equipment. Refer to the STP/IST Installation and Owner's Manual for complete installation and safety information.**

The following photographs (Figures 3 and 4 below) illustrate the new VL coupler in both the unlocked and locked positions. Once the length is correct, secure the STP length by tightening all three coupling setscrews. Tighten the setscrews finger-tight, making sure they come into contact with the pipe. Then tighten each setscrew an additional full turn minimum. The setscrews should be flush or below flush with the surface of the coupling.

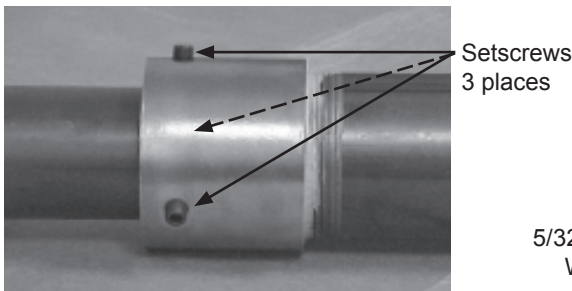


Figure 3 - Variable length coupler in the unlocked position

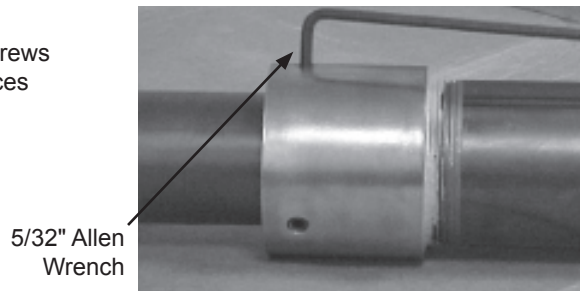


Figure 4 - Variable length coupler in the locked position

Warning  **Failure to lock the variable length column pipe prior to installing the STP/IST could present a risk of death, serious bodily injury and equipment damage due to movement of pipes during installation.**

Please contact Technical Support if we may be of any assistance.