

Extractor Valves

Installation Instructions

320-302-01, 320-302-02 & 325-300-01

Prior to installing an extractor valve, inspect it and the tank bung threads it will be connecting to for contamination, thread damage or rust. If any contamination or rust exists on these surfaces, remove it and dress any damaged threads. It is also very important that riser pipe be deburred or reamed if it's going to be used with either an EBW 320 or 325 extractor valve. Such action is necessary to insure an adequate amount of clearance between the riser pipe's inside diameter and the extractor's fittings (caps, test plugs, etc.).

Note: Schedule 40 pipe is the thickest walled pipe that can be used with these valves (refer to the Schedule 40 table below).

Once the surfaces have been properly prepared for installation, apply pipe sealant to the extractor valve's male threads and thread the valve onto the tank bung's threads. Torque threads to a minimum of 60 ft. lbs., then align the body to the piping arrangement by continuing to thread the body in.

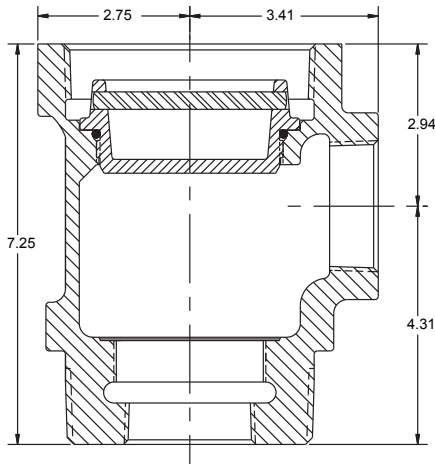
American National Standard Weights and Dimensions for Schedule 40 Pipe

Nom. Size and (O.D.), in.	Wall Thick., in.	Plain End Wgt., lb/ft	Identification*	Accept Welds?
2 (2.375)	0.154	3.65	5L, 5LX STD	No

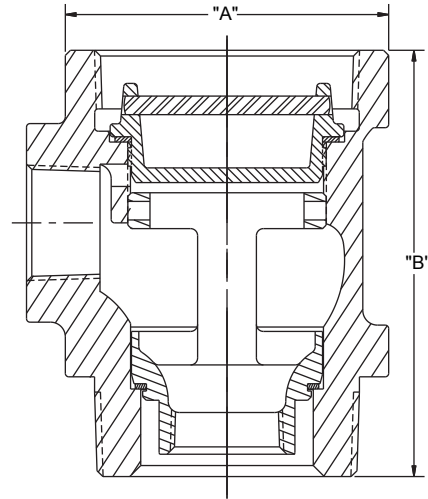
Wall thickness are listed in American Petroleum Institute (API) Standards.

Model 325 Product Line Isolation Valve

Part no.	Model	Size		Weight	
		in.	mm.	lbs.	Kg.
325-300-01	PLIV Valve	4 x 4 x 2	102 x 102 x 51	17	7.71



Model 325 Product Line Isolation Valve



Model 320 Foot Valve Extractor

Model 320 Foot Valve Extractor

Part no.	Inlet Female Thread		Dim A		Dim B		Outlet Thread		Top Thread		Inlet Male Thread		Size		Weight	
	in.	mm.	in.	mm.	in.	mm.	in.	mm.	in.	mm.	in.	mm.	in.	mm.	lbs.	Kg.
320-302-01	1.5	38	5.50	139.7	7.25	184.15	1.5	38	4	102	4	102	4 x 4 x 1 1/2	102 x 102 x 38	20	9.07
320-302-02	1.5	38	5.50	139.7	7.25	184.15	2	51	4	102	4	102	4 x 4 x 2	102 x 102 x 51	20	9.07



Franklin Fueling Systems

3760 Marsh Road • Madison, WI 53718 U.S.A.

Tel: +1 608 838 8786 • Fax: +1 608 838 6433 • www.franklinfueling.com

Tel: USA & Canada 1 800 225 9787 • Tel: Mexico 001 800 738 7610