



**Franklin Fueling Systems**

## Below Grade Base Covers: Lid Handle Replacement

Part Number 71520201

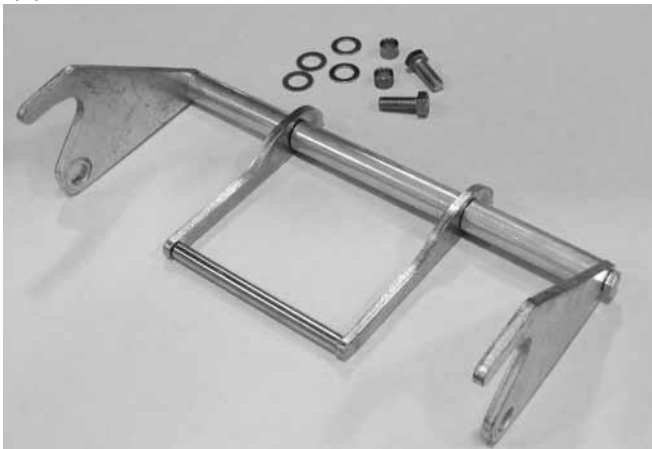
### Installation Instructions

#### Parts List

- Replacement Handle Assembly
- (2) Pivot Spacers
- (2) Bolts
- (4) washers

#### Tools

- Wrenches, 3/8" and 9/16"



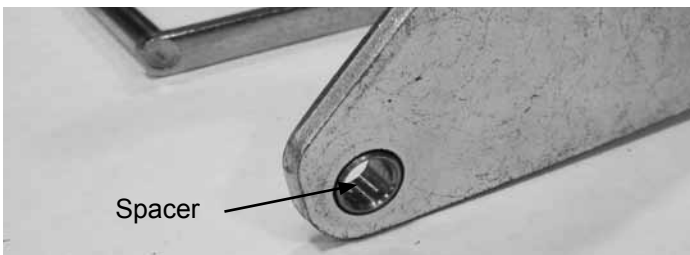
**Replacement Lid Parts**

1. Remove the existing handle from the lid.



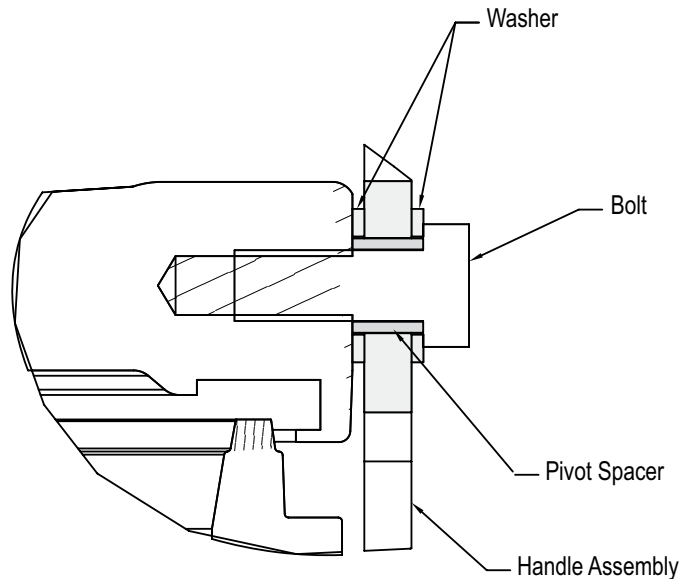
**Existing Fill Lid without Handle**

2. Insert one pivot spacer into one side of the new handle.



Spacer

**Pivot Spacer Installed**



**Handle Attachment Detail**

3. Assemble one side of the handle with the washers, pivot spacer and bolt as shown above.



Loosen bolt  
if needed

**Handle Installation**

4. If needed, when installing the components for the second side, the handle bolt may need to be temporarily loosened to give clearance.



***Handle Installed***

Make sure the handle is oriented properly.  
Tighten the bolts to complete the installation.



**Franklin Fueling Systems**

3760 Marsh Road  
Madison, WI 53718, U.S.A.  
Tel: +1 608 838 8786  
Tel: USA & Canada 1 800 225 9787  
Tel: Mexico 001 800 738 7610  
[www.franklinfueling.com](http://www.franklinfueling.com)

