





490 Series Dual Poppet Nozzle

Operating, Service & Maintenance Manual



Warning  Follow all federal, state and local laws governing the installation, testing and inspection of this product and its associated systems. When no other regulations apply, follow NFPA codes 30, 30A and 70 from the National Fire Protection Association. Failure to follow these codes could result in severe injury, death, serious property damage, environmental contamination and/or system degradation.

Warning  The 490-301-05, 490-301-06 and 490-302-01 are non-automatic nozzles with manually operated latches which will not shut-off automatically. Use should be limited to applications sanctioned by OSHA, State Fire Marshal Codes, and other appropriate regulating bodies and/or safety codes.

Assembly Instructions

1. Remove the nozzle from the shipping container.
2. Remove the protective cap from the nozzle spout.
3. Thread the nozzle spout (Purchased separately) into the nozzle outlet end and tighten it.

Operating Instructions

After attaching the nozzle to the hose, it's ready for operation. Product flow is regulated by lifting up on the hand lever and shut off by releasing the hand lever.

Servicing

Packing Gland Adjustment

If a leak occurs around the stem, retighten the packing nut (item 11) just enough to stop the leakage.

Maintenance/Repair

Should repair or maintenance be required of any component, the following steps must be adhered to:

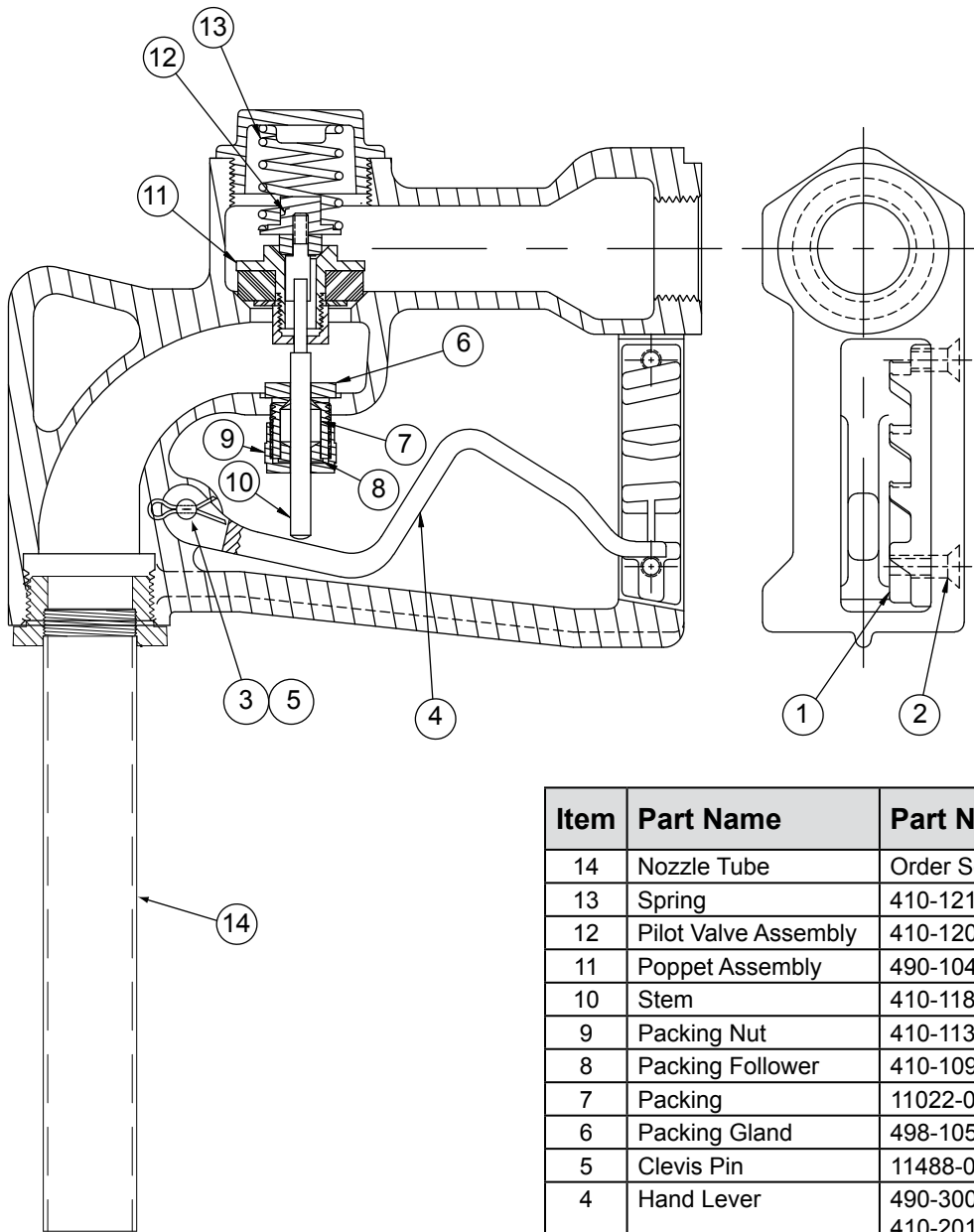
Disassembly

1. Clamp the nozzle securely in a vise of appropriate size.
2. Loosen the cap and remove the spring (item 13), the pilot valve (item 12), the poppet assembly (item 11) and the stem (item 10).
3. Loosen the packing nut (item 9) and remove the follower packing (item 8) and the packing (item 7).

Assembly

1. Insert the packing (item 7) into the packing gland (item 6), then insert the follower packing (item 8) into the packing gland and thread the packing nut (item 9) onto the packing gland (2) turns.
2. Push the stem (item 10) through the packing until it contacts the lever. Drop the poppet assembly (item 11) over the stem, drop the pilot valve assembly (item 12) into the poppet assembly and then install the spring (item 13).
3. Apply a suitable oil and gasoline resistant sealant to the threads of the cap's flange and tighten it down.

490 Series Nozzle Assembly



Item	Part Name	Part Number
14	Nozzle Tube	Order Separately*
13	Spring	410-121-01
12	Pilot Valve Assembly	410-120-01
11	Poppet Assembly	490-104-01
10	Stem	410-118-01
9	Packing Nut	410-113-01
8	Packing Follower	410-109-01
7	Packing	11022-01
6	Packing Gland	498-105-01
5	Clevis Pin	11488-02
4	Hand Lever	490-300-01 for 409-301-05 and -06 410-201-01 for 409-302-01
3	Bushing	410-115-01
2	Flat Head Screw	11015-01
1	Latch-Lever	410-114-01

*** Nozzle Tubes for 490-301 nozzles, 1.25" (31.9 mm) Thread, 8.5" (216.8 mm) length**

Model	Material	Tube Diameter
410-122-01	Brass	1.12" (28.6 mm)
410-133-01	Brass	1.38" (35.2 mm)
491-100-01	Aluminum	1.66" (42.3 mm)
491-107-01	Aluminum	1.31" (33.4 mm)
Nozzle Tubes for 490-302 nozzles, 1.5" (38.3 mm) Thread, 8.5" (216.8 mm) length		
410-116-01	Brass	1.38" (35.2 mm)
410-129-01	Brass	1.62" (41.3 mm)
491-101-01	Aluminum	1.91" (48.7 mm)



Franklin Fueling Systems

3760 Marsh Road
Madison, WI 53718, U.S.A.
Tel: +1 608 838 8786
Tel: USA & Canada 1 800 225 9787
Tel: Mexico 001 800 738 7610
www.franklinfueling.com