



PHIL-TITE

Franklin Fueling Systems

5 Gallon Spill Container With Sensor Package

Installation

Models 40x-FS-xPR-GRY

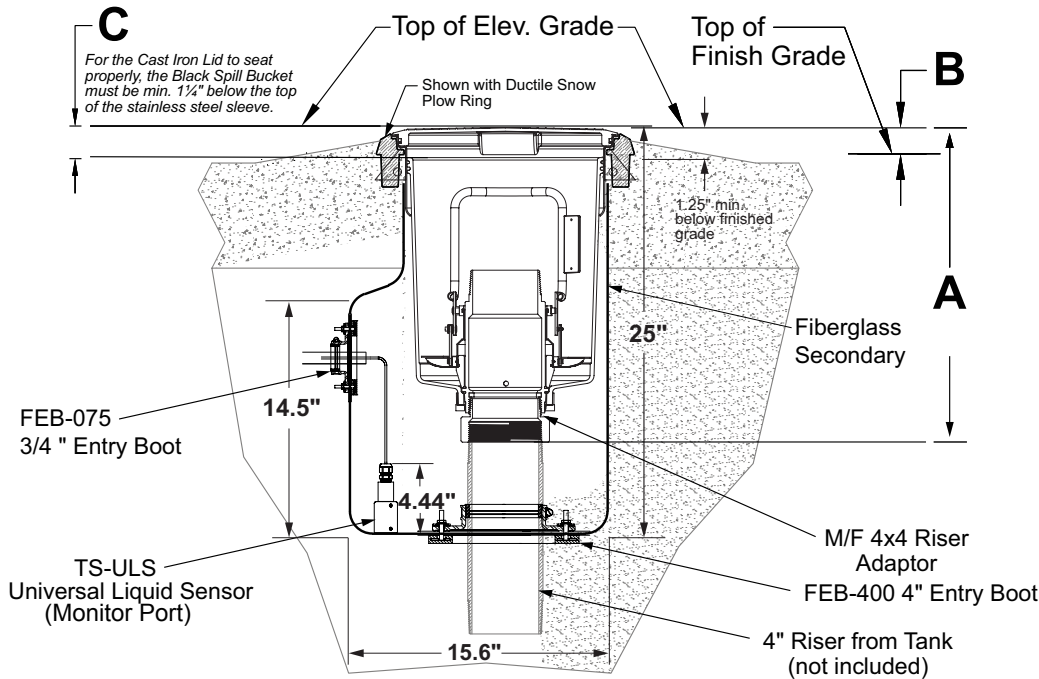


Figure 1: Spill Bucket and Secondary Container Installation

A	B	C
18 1/4" to 20"	1 1/2"	1 1/4"

Dimension "A" = 18 1/4" to 20" (Top of Tank Riser to Finish Grade)

Notes:

- All dimensions shown are approximate. Actual installation conditions may vary these dimensions.

Refer to the following instructions before starting this installation:

- M/F 4x4 Riser adapter - 602019009
- Flexible and Ducted Entry boots - 771-102-00
- 85000-1 Series Spill Containers - 602019001

Installation,

1. Cut riser to dimension A above.
2. Install FEB-400-R 4" flexible entry boot onto the base of the fiberglass secondary. Follow directions in document 771-102-00.
3. Install FEB-075-D 3/4" entry boot onto flat side surface on fiberglass secondary containment. Follow instructions supplied with FEB-075-D. Refer to Figure 1.



Figure 2: Interior view of Fiberglass Secondary with FEB-400-R 4" entry boot.



Figure 3: FEB-075-D Outside View of Boot Installed

NOTE: Install the boot as high up on the flat surface as possible while establishing a seal between the entry boot and fiberglass secondary (Figure 3).



Figure 4: Inside view of FEB-075-D Installed

4. Install fiberglass secondary onto tank riser at the height required to allow the plow ring that is attached to the stainless steel sleeve to be at elevated grade.
5. Tighten band clamp around 4" entry boot to tank riser inside fiberglass secondary. Face band clamp screw towards expanded part of fiberglass secondary for additional space while tightening the clamp.
6. Add the spill bucket ring and sleeve assembly to the fiberglass secondary. Apply single bead of permathane between the fiberglass secondary and stainless steel sleeve. Allow to dry for 5 hours.
7. Install MF4X4 riser adaptor. Follow instructions 602019009 supplied with MF4X4..

8. Install TS-ULS Liquid Sensor.

Install TS-ULS liquid sensor into spill containment secondary (Figure 1).

Be sure to follow National Electrical Codes for Power shut-off during installation.



Figure 5: Fiberglass Secondary with FEB-075-D Installed

9. Install the 851-00-1 or 85101-1 Bucket onto the MF4x4 riser adaptor until the bucket seals to the gasket.
10. Attach the spill bucket lid.



PHIL-TITE
Franklin Fueling Systems

3760 Marsh Road
Madison, WI 53718, U.S.A.
Tel: +1 608 838 8786
Tel: USA & Canada 1 800 225 9787
Tel: Mexico 001 800 738 7610
www.franklinfueling.com